

**ARMY TM 11-6625-2733-24P**  
**NAVY NAVELEX 0969-LP-170-1060**  
**AIR FORCE TO 33D7-49-84-4**

---

**ORGANIZATIONAL DIRECT SUPPORT AND GENERAL SUPPORT MAINTENANCE  
REPAIR PARTS AND SPECIAL TOOLS LIST  
(INCLUDING DEPOT MAINTENANCE REPAIR PARTS AND SPECIAL TOOLS)**

**FOR**

**DUAL TIME BASE PLUG-IN UNIT TD-1159/U  
(NSN 6625-00-261-5139)**

THIS PUBLICATION IS A COURTESY QUICK COPY  
FROM THE UNITED STATES ARMY PUBLICATIONS  
DISTRIBUTION CENTER, ST. LOUIS, MO TO  
MEET YOUR NEEDS WHILE WE REPLENISH OUR  
REGULAR STOCK.

---

**DEPARTMENTS OF THE ARMY, THE NAVY, AND THE AIR FORCE**

**9 OCTOBER 1982**



TECHNICAL MANUAL  
 No. 11-6625-2733-24P  
 TECHNICAL MANUAL  
 NAVELEX 0969-LP-710-1060  
 TECHNICAL ORDER  
 TO 33D7-49-84-4

DEPARTMENTS OF THE ARMY,  
 THE NAVY, AND THE AIR FORCE  
 WASHINGTON, DC, 9 October 1982

ORGANIZATIONAL, DIRECT SUPPORT AND GENERAL SUPPORT MAINTENANCE  
 REPAIR PARTS AND SPECIAL TOOLS LIST  
 (INCLUDING DEPOT MAINTENANCE REPAIR PARTS AND SPECIAL TOOLS)  
 FOR  
 DUAL TIME BASE PLUG-IN UNIT TD-1159/U  
 (NSN 6625-00-261-5139)  
 Current as of 25 February 1982

REPORTING ERRORS AND RECOMMENDING IMPROVEMENTS

You can help improve this manual. If you find any mistakes or if you know of a way to improve the procedures, please let us know, Mail your letter, DA Form 2028 (Recommended Changes to Publications and Blank Forms), or DA Form 2028-2 located in the back of this manual direct to: Commander, US Army Communications-Electronics Command and Fort Monmouth, ATTN: DRESL-ME-MQ, Fort Monmouth, NJ 07703.

For Air Force, submit AFTO Form 22 (Technical Order System Publication Improvement Report and Reply) in accordance with paragraph 6-5, Section VI, T.O. 00-5-1. Forward direct to prime ALC/MST.

For Navy, mail comments to the Commander, Naval Electronics Systems Command, ATTN: ELEX 45053 (O.H.), Washington, DC 20360.

In either case, a reply will be furnished direct to you.

Table of Contents

		Page	Illus
Section	I. Introduction . . . . .	1	
	II. Repair Parts List . . . . .	5	
GROUP	00 Dual Time Base TD-1159/U . . . . .	5	1
	01 Circuit Card Assembly A5 . . . . .	9	2
	02 Circuit Card Assembly A3 . . . . .	11	3
	03 Circuit Card Assembly A2 . . . . .	13	4
	04 Circuit Card Assembly A7 . . . . .	15	5
	05 Circuit Card Assembly A6 . . . . .	21	6
	06 Circuit Card Assembly A4 . . . . .	27	7
	07 Circuit Card Assembly A9 (No parts authorized)		
	08 Circuit Card Assembly . . . . .	31	8
	0801 Circuit Card Assembly A8 . . . . .	33	9
	0802 Cam Switch Assembly (No parts authorized)		
	0803 Circuit Card Assembly A1 . . . . .	37	10
Section	III. Special Tools List (Not applicable)		
	IV. National Stock Number and Part Number Index . . . . .	39	

\*This manual supersedes TM 11-6625-2733-24P/N NAVELEX 0967-LP-170-1060/TO 33D7-49-84-4, 12 July 1977.



## SECTION I

### INTRODUCTION

---

#### 1. Scope

This manual lists spares and repair parts; special tools; special test, measurement, and diagnostic equipment (TMDE), and other special support equipment required for performance of organizational, direct support, and general support maintenance of the TD-1159/U. It authorizes the requisitioning and issue of spares and repair parts as indicated by the source and maintenance codes.

#### 2. General

This Repair Parts and Special Tools List is divided into the following sections:

*a. Section II. Repair Parts List.* A list of spares and repair parts authorized for use in the performance of maintenance. The list also includes parts which must be removed for replacement of the authorized parts. Parts lists are composed of functional groups in numeric sequence, with the parts in each group listed in figure and item number sequence.

*b. Section III. Special Tools List.* Not applicable.

*c. Section IV. National Stock Number and Part Number Index.* A list, in National item identification number (NIIN) sequence, of all National stock numbers (NSN) appearing in the listings, followed by a list, in alphanumeric sequence, of all part numbers appearing in the listings. National stock numbers and part numbers are cross-referenced to each illustration figure and item number appearance.

#### 3. Explanation of Columns

*a. Illustration.* This column is divided as follows:

(1) *Figure number.* Indicates the figure number of the illustration on which the item is shown,

(2) *Item number.* The number used to identify item called out in the illustration.

*b. Source, Maintenance, and Recoverability (SMR) Codes.*

(1) *Source code.* Source codes indicate the manner of acquiring support items for maintenance, repair, or overhaul of end items. Source codes are entered in the first and second positions of the Uniform SMR Code format as follows:

<i>Code</i>	<i>Definition</i>
PA	Item procured and stocked for anticipated or known usage.
XD	A support item that is not stocked. When required, item will be procured through normal supply channels.

#### NOTE

Cannibalization or salvage may be used as a source of supply for any items source coded above except those coded XA and aircraft support items as restricted by AR 700-42.

(2) *Maintenance code.* Maintenance codes are assigned to indicate the levels of maintenance authorized to USE and REPAIR support items. The maintenance codes are entered in the third and fourth positions of the Uniform SMR Code format as follows:

(a) The maintenance code entered in the third position will indicate the lowest maintenance level authorized to remove, replace, and use the support item. The maintenance code entered in the third position will indicate one of the following levels of maintenance:

<i>Code</i>	<i>Application/Explanation</i>
H	Support item is removed, replaced, used at the general support level.

(b) The maintenance code entered in the fourth position indicates whether the item is to be repaired and identifies the lowest maintenance level with the capability to perform complete repair (i.e., all authorized maintenance functions). This position will contain one of the following maintenance codes:

<i>Code</i>	<i>Application/Explanation</i>
H	The lowest maintenance level capable of complete repair of the support item is the general support level.
Z	Nonreparable. No repair is authorized.

(3) *Recoverability code.* Recoverability codes are assigned to support items to indicate the disposition action on unserviceable items. The recoverability code is entered in the fifth position of the Uniform SMR Code format as follows:

<i>Recoverability codes</i>	<i>Definition</i>
Z	Nonreparable item. When unserviceable, condemn and dispose at the level indicated in position 3.
H	Reparable item. When uneconomically repairable, condemn and dispose at the general support level.

*c. National Stock Number.* Indicates the National stock number assigned to the item and will be used for requisitioning purposes.

*d. Federal Supply Code for Manufacturer (FSCM).* The FSCM is a 5-digit numeric code listed in SB 708-41/42 which is used to identify the manufacturer, distributor, or Government agency, etc.

*e. Part Number.* Indicates the primary number used by the manufacturer (individual, company, firm, corporation, or Government activity), which controls the design and characteristics of the item by means of its engineering drawings, specifications, standards, and inspection requirements to identify an item or range of items.

**NOTE**

When a stock numbered item is requisitioned, the repair part received may have a different part number than the part being replaced.

*f. Description.* Indicates the Federal item name and, if required, a minimum description to identify the item.

*g. Unit of Measure (U/M).* Indicates the standard of the basic quantity of the listed item as used in performing the actual maintenance function. This measure is expressed by a two-character alphabetical abbreviation (e.g., ea, in, pr, etc). When the unit of measure differs from the unit of issue, the lowest unit of issue that will satisfy the required units of measure will be requisitioned.

*h. Quantity Incorporated in Unit.* Indicates the quantity of the item used in the breakout shown on the illustration figure, which is prepared for a functional group, subfunctional group, or an assembly.

**4. Special Information**

*a.* The following publication pertains to the TD-1159/U and its components TM 11-6625-2733-14, Dual Time Base Plug-In Unit TD-1159/U.

*b.* National stock numbers (NSN's) that are missing from P source coded items have been applied for and will be added to this TM by future change/revision when they are entered in the Army Master Data File

(AMDF). Until the NSN's are established and published, submit exception requisitions to: Commander US Army Communications-Electronics Command an Fort Monmouth, AITN: DRSEL-MM, Fort Monmouth NJ 07703 for the part required to support your equipment.

**5. How to Locate Repair Parts**

*a.* When National stock number or part number is unknown.

(1) *First.* Using the table of contents, determine the functional group within which the item belongs. This is necessary since illustrations are prepared for functional groups and listings are divided into the same groups.

(2) *Second.* Find the illustration covering the functional group to which the item belongs.

(3) *Third.* Identify the item on the illustration and note the illustration figure and item number of the item.

(4) *Fourth.* Using the Repair Parts Listing, find the figure and item number noted on the illustration.

*b.* When National stock number or part number is known.

(1) *First.* Using the Index of National Stock Numbers and Part Numbers, find the pertinent National stock number or part number. This index is in NIIN sequence followed by a list of part numbers in alpha merit sequence, cross-referenced to the illustration figure number and item number.

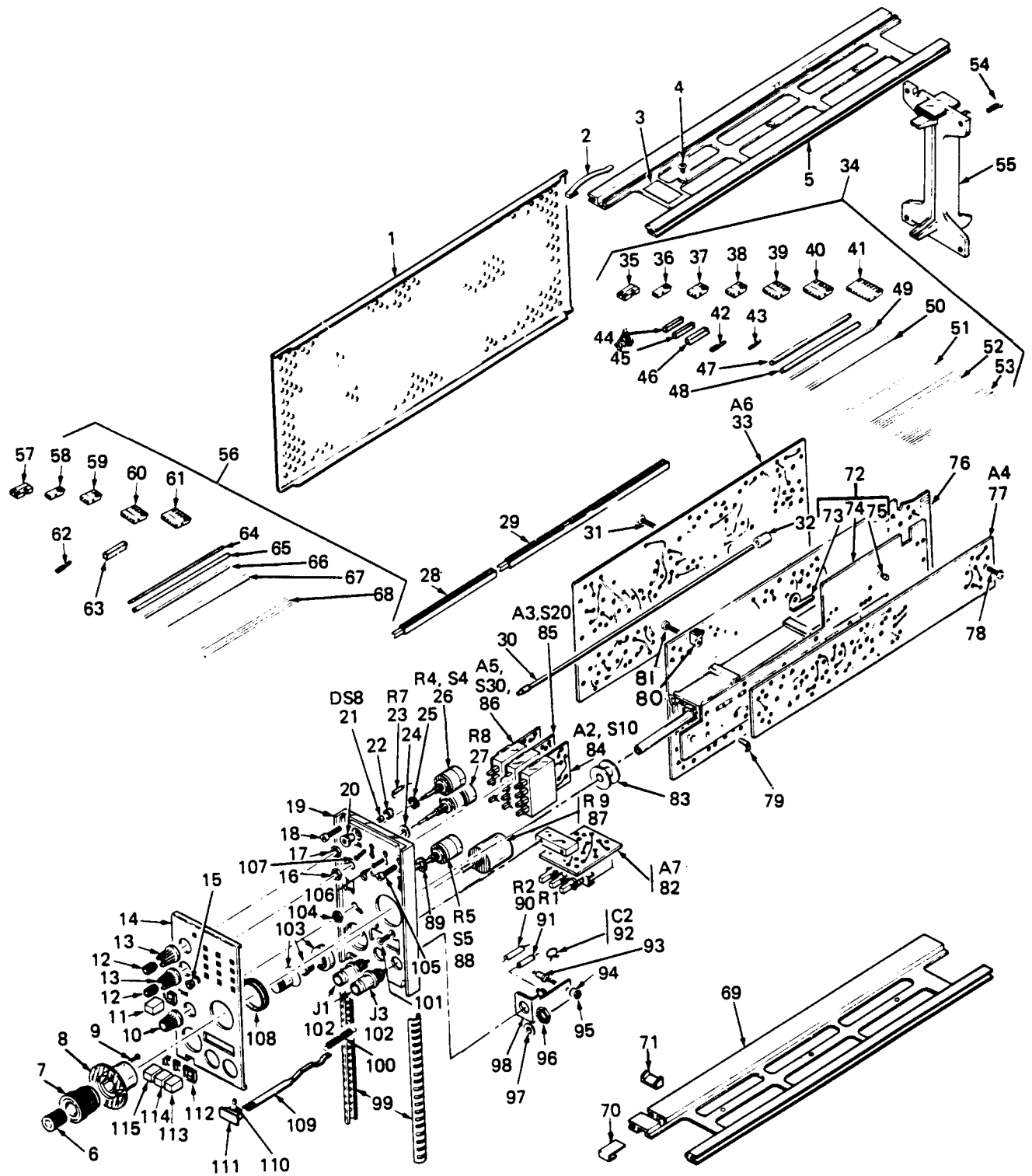
(2) *Second.* After finding the figure and item number, locate the figure and item number in the repair parts list.

**6. Abbreviations**

Not applicable.

**(Next printed page is 4)**





ELOPF001

Figure 1. Dual Time Base TDI159/U



SECTION II

(1) ILLUSTRATION		(2)	(3)	(4)	(5)	(6)	(7)	(8)
(a) FIG NO	(b) EM NO	SMR CODE	NATIONAL STOCK NUMBER	FSCM	PART NUMBER	DESCRIPTION	USABLE ON CODE	QTY INC IN UNIT
						GRID#P000 DUAL TIME BASE TP0-4159/U		
1	1	XDHZZ	625-01-103-8128	80009	337-1064-04	SHIELD,ELEC.....A	EA	2
1	2	XDHZZ		80009	214-1061-00	SPRING,FLAT.....EA	EA	1
1	3	XDHZZ		80009	334-3438-00	MARKER,IDENT.....EA	EA	1
1	4	PAHZZ	3305-00-841-8060	80009	211-0105-00	SCREW,MACHINE.....EA	EA	6
1	5	XDHZZ		80009	426-0505-11	FRSECT,PLUG-IN.....EA	EA	1
1	6	PAHZZ	3355-01-004-8024	80009	366-1405-00	KNOB.....EA	EA	1
1	7	PAHZZ	3355-00-343-4306	80009	366-1321-00	KNOB.....EA	EA	1
1	8	XDHZZ		80009	354-0410-00	KNOB.....EA	EA	1
1	9	XDHZZ		80009	384-1087-00	SHAFT,PUSH,ACTR.....EA	EA	1
1	10	PAHZZ	3355-00-763-2993	80009	366-0494-00	KNOB.....EA	EA	1
1	11	PAHZZ	3975-00-139-0296	80009	366-1257-93	PUSHBUTTON.....EA	EA	1
1	12	PAHZZ	3355-01-068-1340	80009	366-1391-02	KNOB.....EA	EA	2
1	13	PAHZZ	3355-00-419-4045	80009	366-1077-00	KNOB.....EA	EA	2
1	14	XDHZZ		80009	333-1542-02	PANEL,FRONT.....EA	EA	1
1	15	XDHZZ		28520	8-187-125	BUSHING,SLEEVE.....EA	EA	1
1	16	PAHZZ	3310-00-231-4954	73743	2X-20319-402	NUT,PLAIN,HEXAGON.....EA	EA	1
1	17	PAHZZ	3310-00-231-4954	73743	2X-20319-402	NUT,PLAIN,HEXAGON.....EA	EA	1
1	18	XDHZZ		80009	213-0192-00	SCREW,TAPPING,THREA.....EA	EA	4
1	19	XDHZZ		80009	386-1447-58	SUBPANEL,FRONT.....EA	EA	1
1	20	XDHZZ	3250-00-474-0489	80009	352-0157-00	LAMPHOLDER.....EA	EA	1
1	21	PAHZZ	3961-01-044-5776	72619	521-9206	LIGHTEMITTINGDIOD.....EA	EA	1
1	22	XDHZZ	3210-00-442-2334	80009	200-0935-00	CAP,LAMPHOLDER.....EA	EA	1
1	23	PAHZZ	3905-00-119-8811	81349	RCR07G151JS	RESISTOR,FIXED,COMP.....EA	EA	1
1	24	PAHZZ	3310-00-158-5237	80009	210-0940-00	WASHER,FLAT.....EA	EA	1
1	25	PAHZZ	3310-00-158-5237	80009	210-0940-00	WASHER,FLAT.....EA	EA	1
1	26	PAHZZ	3905-00-378-0338	12697	381-CM39695	RESISTOR,VARIABLE,N.....EA	EA	1
1	27	PAHZZ	3905-01-033-8421	12697	381-CM39691	RESISTOR,VARIABLE,N.....EA	EA	1
1	28	XDHZZ	3920-01-063-2437	80009	384-1101-00	EXTENSIONSHAFT.....EA	EA	1
1	29	XDHZZ		80009	384-1059-00	EXTENSIONSHAFT.....EA	EA	1
1	30	XDHZZ		80009	384-1120-00	EXTENSIONSHAFT.....EA	EA	1
1	31	PAHZZ	3305-00-043-6638	80009	211-0008-00	SCREW,MACHINE.....EA	EA	4
1	32	XDHZZ		80009	376-0101-00	COUPLING,SHAFT,RIGI.....EA	EA	1
1	33	PAHMM	6625-01-118-5647	80009	670-1864-03	CIRCUITCARDASSEMB.....EA	EA	1
1	34	XDHMM		80009	198-2121-00	WIRESET,ELEC.....EA	EA	1
1	35	PAHZZ	5935-00-597-5055	80009	352-0198-00	HOLDER,TERMINAL CON.....EA	EA	4
1	36	PAHZZ	5935-00-597-5054	80009	352-0169-00	HOLDER,TERMINAL CON.....EA	EA	4
1	37	PAHZZ	5935-00-599-8831	80009	352-0161-00	CONNECTORBODY,RECE.....EA	EA	1
1	38	PAHZZ	5935-01-030-3001	80009	352-0161-02	CONNECTORBODY,PLUG.....EA	EA	1
1	39	PAHZZ	5935-00-599-8832	80009	352-0163-00	CONNECTORBODY,RECE.....EA	EA	1

## SECTION II

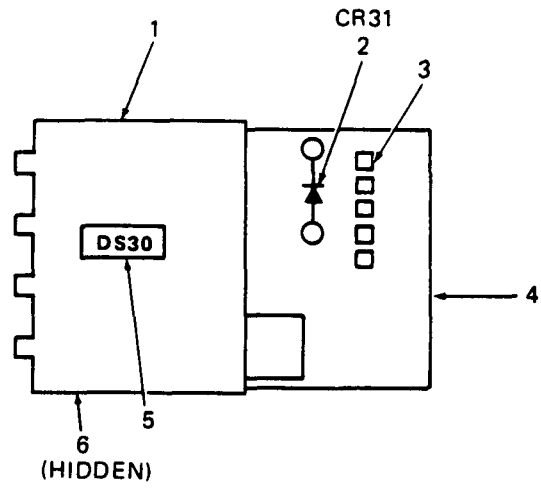
TM 11-6625-2733-24P/NAVELEX 0969-LP-170-1060/TO 33D7-49-84-4

(1) ILLUSTRATION		(2)	(3)	(4)	(5)	(6)	(7)	(8)
(a) FIG NO	(b) TEM NO	SMR CODE	NATIONAL STOCK	FSCM	PART NUMBER	DESCRIPTION	U/ USABLE ON CODE	QTY INC IN UNIT
1	40	'AHZZ	5935-01-035-040	80009	352-0164-00	CONNECTOR BODY, PLUG.....	EA	4
1	41	'AHZZ	5940-01-021-983	80009	352-0166-00	HOLDER, TERMINAL.....	EA	1
1	42	'DHZZ	5940-00-226-961	22526	46235	TERMINAL, QUICK DISC.....	EA	4
1	43	'AHZZ	5999-00-285-298	26512	GT805EC2	CONTACT, ELECTRICAL.....	EA	57
1	44	'AHZZ	5999-01-022-661	22526	46241	CONTACT, ELECTRICAL.....	EA	2
1	45	'AHZZ	5999-00-500-965	22526	47437	CONTACT, ELECTRICAL.....	EA	4
1	46	'AHZZ	5999-01-023-157	22526	46221	CONTACT, ELECTRICAL.....	EA	2
1	47	'DHZZ	6145-00-500-567	90484	DAB70JAAAHWITE	CABLE, RADIO FREQUEN.....	FT	V
1	48	'DHZZ		80009	175-1043-00	CABLE, RF.....	FT	V
1	49	'DHZZ		80009	175-0825-00	WIRE, ELECTRICAL.....	FT	V
1	50	'DHZZ		80009	175-0826-00	WIRE, ELECTRICAL.....	FT	V
1	51	'DHZZ		08261	55-526-710610C	WIRE, ELECTRICAL.....	FT	V
1	52	'DHZZ		08261	55-0626-710610C	WIRE, ELECTRICAL.....	FT	V
1	53	'DHZZ		08261	55-0826-710610C	WIRE, ELECTRICAL.....	FT	V
1	54	'DHZZ		80009	213-0192-00	SCREW, TAPPING, THREA.....	EA	4
1	55	'DHZZ		80009	386-1402-00	PANEL, REAR.....	EA	1
1	56	'DHMM		80009	198-2443-00	WIRESSET, ELEC.....	EA	1
1	57	'AHZZ	5935-00-434-289	80009	352-0169-01	CONNECTOR BODY, RECE.....	EA	1
1	58	'AHZZ	5935-00-597-505	80009	352-0169-00	HOLDER, TERMINAL CON.....	EA	4
1	59	'AHZZ	5935-01-030-512	80009	352-0161-05	CONNECTOR BODY, PLUG.....	EA	1
1	60	'AHZZ	5999-01-022-914	80009	352-0162-00	HOLDER, CONTACT.....	EA	1
1	61	'AHZZ	5935-00-599-883	80009	352-0163-00	CONNECTOR BODY, RECE.....	EA	1
1	62	'AHZZ	5999-00-285-298	26512	GT805EC2	CONTACT, ELECTRICAL.....	EA	22
1	63	'AHZZ	5999-00-500-965	22526	47437	CONTACT, ELECTRICAL.....	EA	2
1	64	'DHZZ		80009	175-0072-00	CABLE, RF.....	FT	V
1	65	'DHZZ	6145-00-500-567	90484	DAB70JAAAHWITE	CABLE, RADIO FREQUEN.....	FT	V
1	66	'DHZZ		80009	175-0825-00	WIRE, ELECTRICAL.....	FT	V
1	67	'DHZZ		80009	175-0826-00	WIRE, ELECTRICAL.....	FT	V
1	68	'DHZZ		08261	55-526-710610C	WIRE, ELECTRICAL.....	FT	V
1	69	'DHZZ		80009	426-0499-11	FR SECT, PLUG IN.....	EA	1
1	70	'DHZZ		80009	214-1054-00	CLIP, SPRING TENSION.....	EA	1
1	71	'DHZZ		80009	105-0075-00	STRIKE, CATCH.....	EA	1
1	72	'AHMM	6625-00-520-494	80009	670-2216-00	SHIELD, CIRCUIT CARD.....	EA	1
1	73	'DHZZ		80009	386-2228-00	SUPPORT, CKTBD.....	EA	1
1	74	'DHZZ		80009	388-2757-00	PRINTED WIRING.....	EA	1
1	75	'DHZZ		80009	131-0937-00	TERMINAL, LUG.....	EA	2
1	76	'AHMM	6625-01-118-486	80009	672-0049-04	CIRCUIT CARD ASSEMB.....	EA	1
1	77	'AHMM	6625-01-110-602	80009	670-1865-04	CIRCUIT CARD ASSEMB.....	EA	1
1	78	'AHZZ	5305-00-043-663	80009	211-0008-00	SCREW, MACHINE.....	EA	3
1	79	'AHZZ	5340-00-927-493	80009	343-0088-00	CLAMP.....	EA	1

## SECTION II

TM 11-6625-2733-24P/NAVELEX 0969-LP-170-1060/TO 33D7-49-84-4

(1) ILLUSTRATION		(2)	(3)	(4)	(5)	(6)	(8)
(8) FIG NO	(D) ITEM NO	SMR CODE	NATIONAL STOCK NUMBER	FSCM	PART NUMBER		QTY INC IN UNIT
1	80	XDMZZ		80009	220-0547-01	NUT, BLOCK.....	EA 6
1	81	PAHZZ	5305-00-043-6638	80009	211-0008-00	SCREW, MACHINE.....	EA 6
1	82	PAHMM		80009	670-1866-01	CIRCUIT CARD ASSEMB.....	EA 1
1	83	PAHZZ	5930-01-047-6715	80009	214-1597-00	ADAPTER, SWITCHACTU.....	EA 1
1	84	PAHMM	6625-00-412-8382	80009	670-1869-00	CIRCUIT CARD ASSEMB.....	EA 1
1	85	PAHMM	6625-00-516-8398	80009	670-1868-00	CIRCUIT CARD ASSEMB.....	EA 1
1	86	PAHMM	6625-00-397-4152	80009	670-1867-00	CIRCUIT CARD ASSEMB.....	EA 1
1	87	PAHZZ	5905-00-546-3183	02111	534-70	RESISTOR, VARIABLE, W.....	EA 1
1	88	PAHZZ	5905-00-488-8105	12697	381-CM39701	RESISTOR, VARIABLE, N.....	EA 1
1	89	PAHZZ	5310-00-158-5237	80009	210-0940-00	WASHER, FLAT.....	EA 1
1	90	PAHZZ		01121	CB1015	RESISTOR, FIXED, COMP.....	EA 1
1	91	PAHZZ	5905-00-914-2448	75042	CECT0-4993F	RESISTOR, FIXED, FILM.....	EA 1
1	92	PAHZZ	5910-01-055-6719	81349	CMR05E360G0DR	CAPACITOR, FIXED, MIC.....	EA 1
1	93	XDMZZ		71279	572-4894-01-0516	INSULATOR, STDF.....	EA 1
1	94	XDMZZ		78189	1202-00-00-0541C	WASHER, LOCK.....	EA 1
1	95	XDMZZ		18876	10034399-A	NUT, PLAIN, HEX.....	EA 1
1	96	PAHZZ	5310-00-407-4601	73743	2X28269-402	NUT, PLAIN, HEXAGON.....	EA 2
1	97	PAHZZ	5310-00-470-3187	78189	1220-02-00-0541C	WASHER, LOCK.....	EA 2
1	98	XDMZZ		80009	337-1317-00	SHIELD, ELEC.....	EA 1
1	99	XDMZZ	5999-00-434-2894	80009	348-0235-00	SHIELDING GASKET, EL.....	EA 2
1	100	XDMZZ		80009	214-1280-00	SPRING, HELICAL, EXTE.....	EA 1
1	101	PAHZZ	5305-00-492-2145	80009	211-0101-00	SCREW, MACHINE.....	EA 2
1	102	PAHZZ	5935-00-001-7558	13511	31-279	CONNECTOR, RECEPTAC.....	EA 2
1	103	XDMZZ	5985-00-386-8255	05129	771-5-1	DIAL CONTROL.....	EA 1
1	104	PAHZZ	5310-00-231-4954	73743	2X-20319-402	NUT, PLAIN, HEXAGON.....	EA 1
1	105	XDMZZ		80009	211-0156-00	SCREW, MACHINE.....	EA 4
1	106	XDMZZ		80009	211-0156-00	SCREW, MACHINE.....	EA 2
1	107	XDMZZ		80009	211-0156-00	SCREW, MACHINE.....	EA 2
1	108	XDMZZ	3120-00-610-5738	80009	401-0126-00	BEARING, KNOBSKIRT.....	EA 1
1	109	PAHZZ	6625-01-083-7347	80009	105-0076-02	RELEASEBAR LATCH.....	EA 1
1	110	XDMZZ	5315-00-579-9841	72962	52-022-094-0187	PIN, SPRING.....	EA 1
1	111	PAHZZ	5355-01-044-5249	80009	366-1058-50	KNOB.....	EA 1
1	112	PAHZZ	5975-01-025-4623	80009	426-0681-00	PUSH BUTTON.....	EA 4
1	113	PAHZZ	5975-00-139-0271	80009	366-1257-92	PUSH BUTTON.....	EA 1
1	114	PAHZZ	5975-00-139-0270	80009	366-1257-91	BUTTON.....	EA 1
1	115	PAHZZ	5975-00-139-0251	80009	366-1257-90	PUSH BUTTON.....	EA 1



NOTE: FOR COMPLETE REFERENCE DESIGNATION PREFIX WITH A5.

ELOPF002

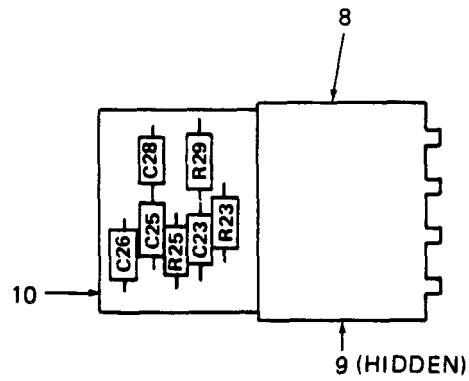
Figure 2. Circuit Card Assembly A5

SECTION II

TM 11-6625-2733-24P/NAVELEX 0969-LP-170-1060/TO 33D7-49-84-4

-84-4

(1) ILLUSTRATION		(2)	(3)	(4)	(5)	(6)	(8)
(a) FIG NO	(b) TEM NO	SMR CODE	NATIONAL STOCK NUMBER		PART NUMBER	DESCRIPTION  USABLE ON CODE	QTY INC IN UNIT
						GROUP 01 CIRCUIT CARD ASSEMBLY A5	
2	1	PAMZZ	5930-00-397-412		166-1249-02	PUSH BUTTON.....	1
2	2	PAMZZ	5961-00-105-768	2129	1N4152R	SEMICONDUCTOR DEVICE.....	1
2	3	PAMZZ	5999-00-551-943	2252	7357	CONTACT, ELECTRICAL.....	6
2	4	IDMZZ			188-2428-00	PRINTED WIRING.....	1
2	5	PAMZZ	240-00-062-617		83AS15	LAMP, INCANDESCENT.....	1
2	6	IDHZZ			31-0722-00	CONTACT, ELECTRICAL.....	3



REF. DES.	ITEM NO.
C23	1
C25	2
C26	3
C28	4
R23	5
R25	6
R 29	7

NOTE: FOR COMPLETE REFERENCE DESIGNATION PREFIX WITH A3.

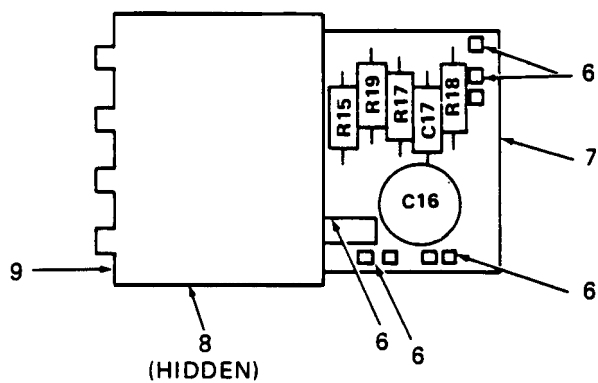
ELOPF003

Figure 3. Circuit Card Assembly A3

SECTION II

TM 11-6625-2733-24P/NAVELEX 0960-LP-170-1060/TO 33D7-49-84-4

(1) LUSTRATION		(2)	(3)	(4)	(5)	(6)	(7)	(8)
(a) FIG NO	(b) TEM NO	SMR CODE	NATIONAL STOCK NUMBER	SCM	PART NUMBER	DESCRIPTION  USABLE ON CODE	/M	QTY INC IN UNIT
						GROUP 02 CIRCUIT CARD ASSEMBLY A3		
3	1	PAHZZ	5910-00-827-6274	1349	C30UJ680G	CAPACITOR, FIXED, CER.....	A	1
3	2	PAHZZ	5910-00-989-7296	7965	.2019	CAPACITOR, FIXED, CER.....	A	1
3	3	PAHZZ	5910-00-430-5756	2982	101-000COG0150J	CAPACITOR, FIXED, CER.....	A	1
3	4	PAHZZ	5910-00-814-7525	6285	9C241	CAPACITOR, FIXED, CER.....	A	1
3	5	PAHZZ	5905-00-105-7765	1121	.82245	RESISTOR, FIXED, COMP.....	A	1
3	6	PAHZZ	5905-00-909-3961	1121	.83335	RESISTOR, FIXED, COMP.....	A	1
3	7	PAHZZ		1121	.81015	RESISTOR, FIXED, COMP.....	A	1
3	8	PAHZZ	5930-00-397-4124	0009	166-1135-02	PUSHBUTTON.....	A	1
3	9	XDHZZ		0005	31-0722-00	CONTACT, ELECTRICAL.....	A	5
3	10	XDHZZ		0005	188-2429-00	PRINTED WIRING.....	A	1



REF. DES.	ITEM NO.
C16	1
C17	2
R15	3
R17	4
R18	5
R19	3

NOTE: FOR COMPLETE REFERNECE DESIGNATION PREFIX WITH A2

ELOPF004

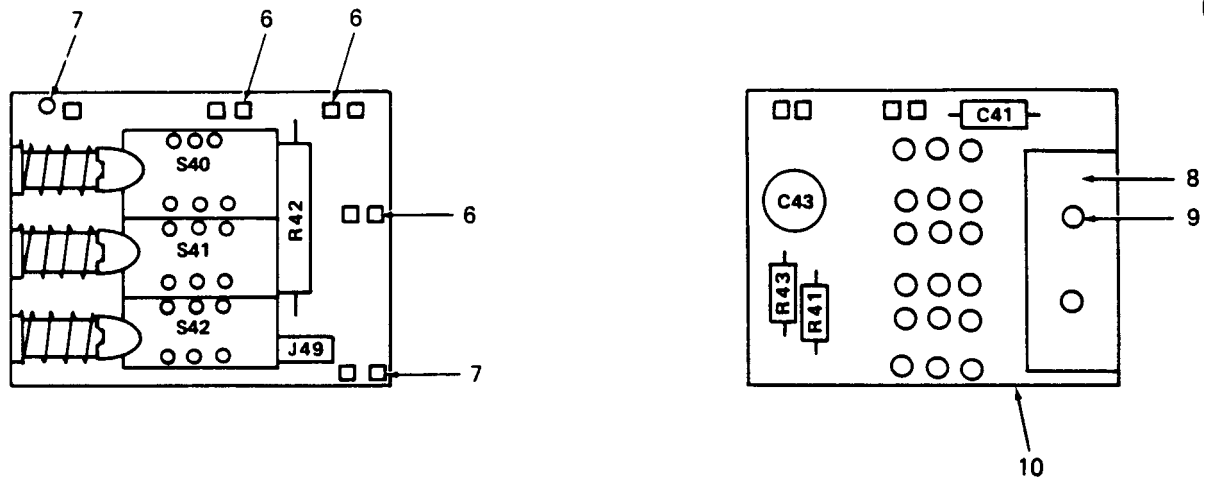
Figure 4. Circuit Card Assembly A2



SECTION II

TM 11-6625-2733-24P/NAVELEX 0969-LP-170-1060/TO 33D7-49-84-4

(1) ILLUSTRATION		(2)	(3)	(4)	(5)	(6)	(7)	(8)
(a) FIG NO	(b) TEM NO	SMR CODE	NATIONAL STOCK NUMBER	FSCM	PART NUMBER	DESCRIPTION	USABLE ON CODE	QTY INC IN UNIT
						GROUP 03 CIRCUIT CARD ASSEMBLY A2		
4	1	AHZZ	5910-00-983-262	7298	138-011 D9-35	CAPACITOR,VARIABLE.....	A	1
4	2	AHZZ	5910-00-816-415	8134	C22UJ470F	CAPACITOR,FIXED,CER.....	A	1
4	3	AHZZ	5905-00-104-836	8134	CR07G470JS	RESISTOR,FIXED,COMP.....	A	2
4	4	AHZZ		9163	1FF1816G45302F	RESISTOR,FIXED,FILM.....	A	1
4	5	AHZZ		1970	1F5C05622F	RESISTOR,FIXED,FILM.....	A	1
4	6	AHZZ	5999-00-275-021	2252	7350	CONTACT,ELECTRICAL.....	A	7
4	7	DHZZ		3000	188-2430-00	PRINTEDWIRING.....	A	1
4	8	DHZZ		8000	31-0722-00	CONTACT,ELECTRICAL.....	A	6
4	9	AHZZ	5930-00-397-412		166-1135-02	PUSHBUTTON.....	A	1



REF. DES.	ITEM NO.	REF. DES.	ITEM NO.
C41	1	R43	3
C43	2	S40	5
R41	3	S41	5
R42	4	S42	5

NOTE: FOR COMPLETE REFERENCE DESIGNATION PREFIX WITH A7.

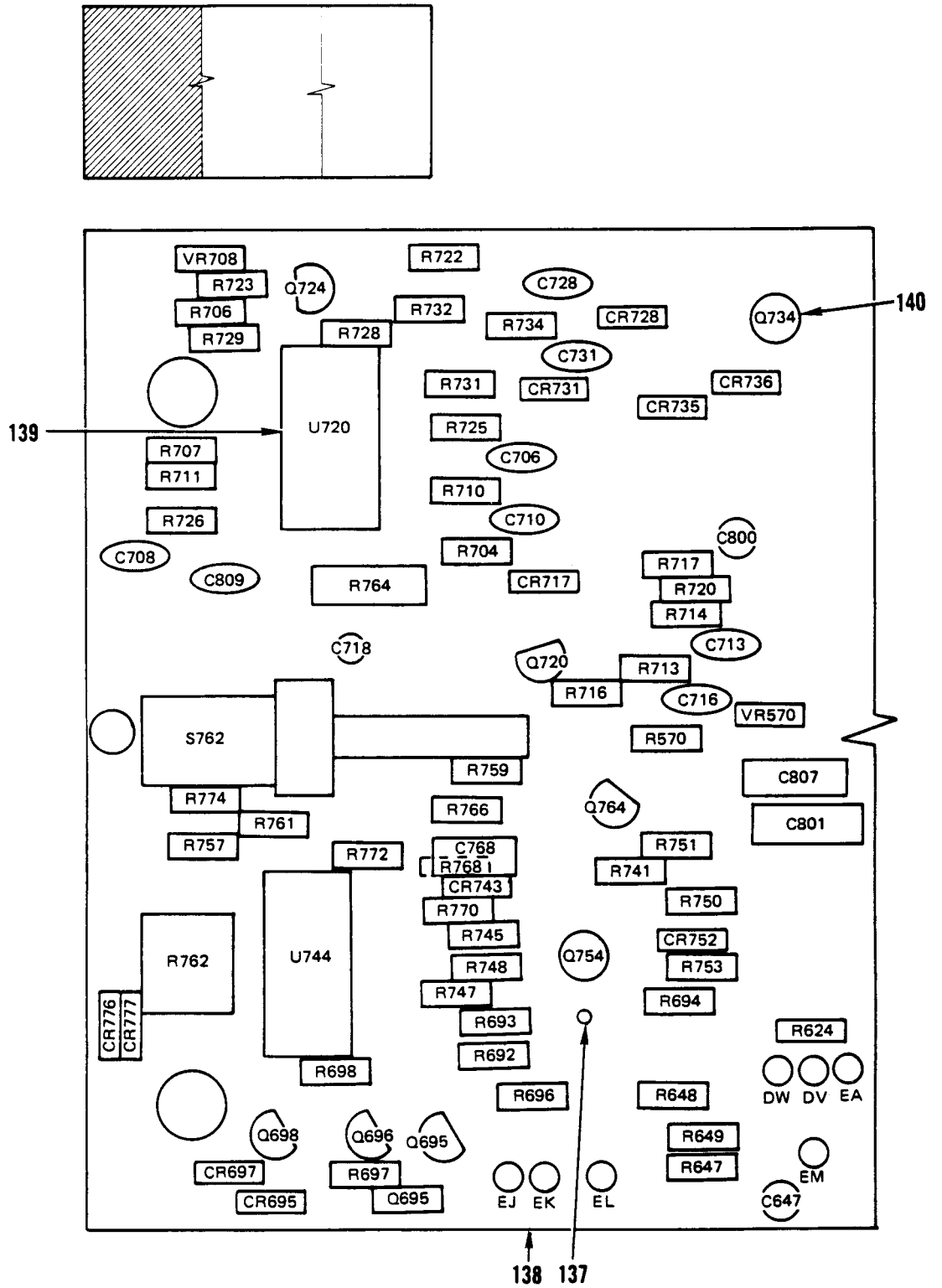
ELOPF005

Figure 5. Circuit Card Assembly 7

SECTION II

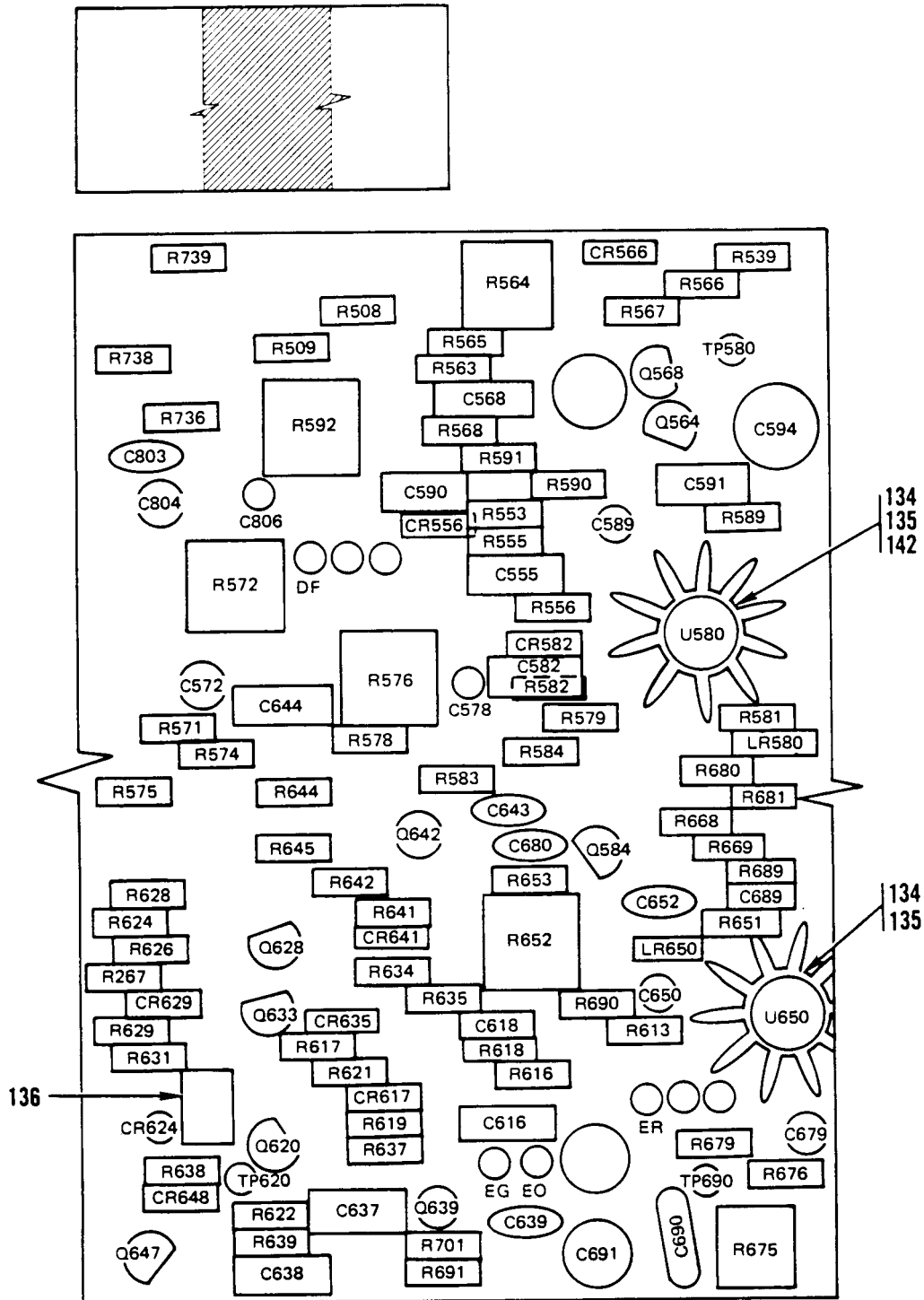
TM 11-6625-2733-24P/NAVELEX 0969-170-1060/TO 33D7-49-84-4

(1) ILLUSTRATION		(2)	(3)	(4)	(5)	(6)	(7)	(8)
(a) FIG NO	(b) ITEM NO	SMA CODE	NATIONAL STOCK NUMBER	FSCM	PART NUMBER	DESCRIPTION  USABLE ON CODE	QTY INC IN UNIT	
GROUP 04 CIRCUIT CARD ASSEMBLY A7								
5	1	PAHZZ	5910-00-814-7525	6285	9C241	CAPACITOR, FIXED, CER.....	1	1
5	2	XDHZZ	5910-00-050-8329	2985	08-000C0G0270K	CAPACITOR, FIXED, CER.....	1	1
5	3	PAHZZ		1121	8E015	RESISTOR, FIXED, COMP.....	2	2
5	4	PAHZZ	5905-00-914-2448	5045	ECTO-4993F	RESISTOR, FIXED, FILM.....	1	1
5	5	PAHZZ	5930-00-369-7915	1005	60-1133-00	SWITCH ASSEMBLY.....	1	1
5	6	PAHZZ	5999-00-551-9433	2525	7357	CONTACT, ELECTRICAL.....	8	8
5	7	PAHZZ	5999-00-275-0213	2525	7350	CONTACT, ELECTRICAL.....	4	4
5	8	XDHZZ			20-0637-00	NUTBLOCK.....	1	1
5	9	PAHZZ	5305-00-249-4882	000	11-0001-00	SCREW, MACHINE.....	2	2
5	10	XDHZZ		1005	88-2427-00	PRINTED WIRING.....	1	1



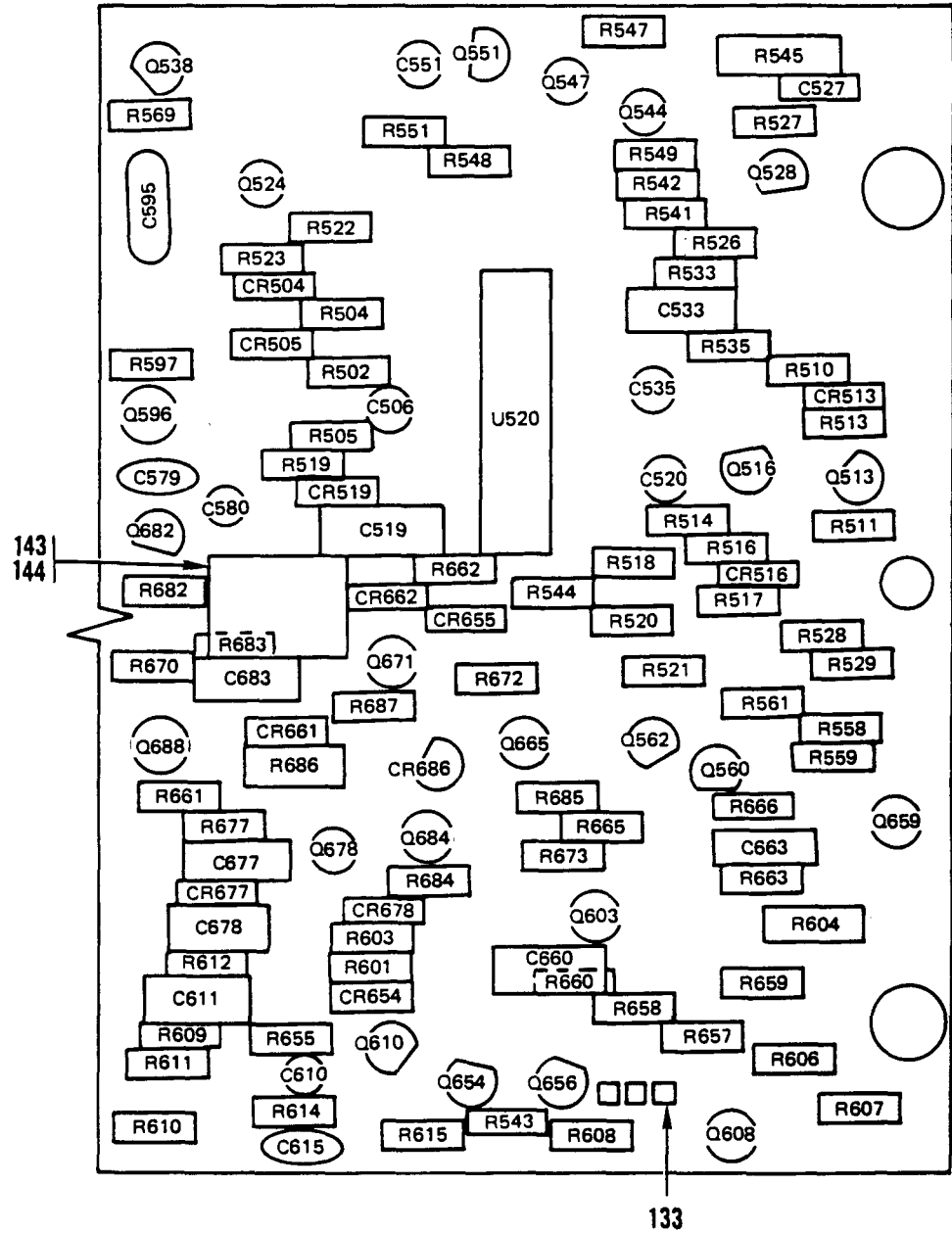
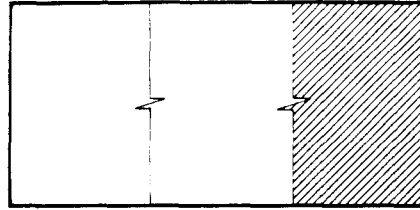
ELOPF006

Figure 6. Circuit Card Assembly A6 (Sheet 1 of 5)



ELOPF007

Figure 6. Circuit Card Assembly A6 (Sheet 2 of 5)



ELOPF008

Figure 6. Circuit Card Assembly A6 (Sheet 3 of 5)

REFERENCE DESIGNATION-TO-ITEM NUMBER TABLE

REF DES	ITEM NO.	REF DES	ITEM NO.	REF DES	ITEM NO.	REF DES	ITEM NO.	REF DES	ITEM NO.	REF DES	ITEM NO.
C506	1	C716	9	Q513	26	R513	46	R582	77	R653	77
C519	2	C718	3	Q516	27	R514	47	R583	78	R655	99
C520	3	C728	15	Q524	28	R516	48	R 584	65	R657	50
C527	4	C731	15	Q528	29	R517	49	R 589	79	R658	100
C528	5	C768	19	Q538	27	R518	50	R590	80	R659	73
C533	6	C800	3	Q544	30	R519	51	R591	81	R660	101
C535	3	C801	20	Q547	30	R520	52	R592	82	R661	100
C551	3	C803	9	Q551	27	R521	53	R597	71	R 662	65
C555	1	C804	21	Q560	27	R 5 2 2	50	R601	59	R663	101
C568	2	C806	3	Q562	27	R523	50	R 603	83	R 665	96
C572	8	C807	20	Q564	31	R526	50	R604	84	R 666	45
C578	3	C809	9	Q568	31	R527	50	R 606	85	R668	77
C579	9	CR504	22	Q584	29	R528	54	R607	60	R 669	102
C580	3	CR505	22	Q596	32	R529	55	R 608	86	R670	73
C582	10	CR513	22	Q603	30	R533	56	R609	45	R672	45
C589	3	CR516	22	Q608	30	R535	57	R610	59	R673	50
C590	2	CR519	22	Q610	27	R 539	50	R611	65	R675	82
C591	11	CR528	22	Q620	29	R541	58	R612	45	R676	81
C594	12	CR556	22	Q628	33	R542	59	R613	50	R677	80
C595	13	CR566	22	Q633	27	R543	60	R614	87	R679	79
C610	14	CR582	23	Q639	30	R 544	53	R615	88	R680	68
C611	7	CR617	22	Q642	30	R545	61	R616	68	R681	90
C615	15	CR624	22	Q647	29	R547	62	R617	89	R682	103
C616	7	CR629	22	Q654	29	R 548	43	R618	50	R683	50
C618	16	CR635	22	Q656	31	R 549	63	R619	90	R 684	104
C637	17	CR641	22	Q659	30	R551	58	R621	71	R685	105
C638	17	CR 648	22	Q665	30	R553	64	R622	50	R686	106
C639	9	CR654	23	Q671	31	R555	65	R624	91	R687	105
C643	9	CR655	22	Q678	34	R 558	66	R626	52	R689	50
C644	7	CR661	22	Q682	27	R559	67	R627	92	R690	77
C647	14	CR662	22	Q684	35	R561	68	R628	93	R691	66
C650	3	CR677	22	Q688	35	R563	65	R 629	68	R692	107
C652	9	CR678	23	Q695	36	R 564	69	R631	52	R693	107
C660	7	CR686	24	Q696	36	R565	70	R634	94	R 694	66
C663	7	CR695	22	Q698	31	R 566	71	R635	95	R695	54
C677	2	CR697	22	Q720	33	R567	72	R637	50	R696	108
C678	17	CR717	22	Q724	27	R568	73	R638	65	R697	54
C679	3	CR728	22	Q734	37	R569	65	R639	96	R698	50
C680	15	CR731	22	Q754	38	R570	74	R641	65	R701	109
C683	18	CR735	22	Q764	27	R571	68	R642	96	R704	109
C689	7	CR736	22	R502	39	R572	75	R644	50	R706	68
C690	13	CR743	22	R 504	40	R574	41	R 645	65	R707	56
C691	12	CR752	22	R505	41	R575	42	R647	97	R710	110
C706	15	CR776	22	R508	42	R576	75	R648	53	R711	56
C708	9	CR777	22	R509	43	R578	68	R649	92	R713	111
C710	15	LR580	25	R510	44	R579	76	R651	77	R714	112
C713	9	LR650	25	R511	45	R581	77	R652	98	R716	112

Figure 6. Circuit Card Assembly A6 (Sheet 4 of 5)

REFERENCE DESIGNATION-TO-ITEM NUMBER TABLE

REF OES	ITEM NO.	REF OES	TEM NO.	REF OES	ITEM NO.
R717	107	R757	86		
R720	113	R759	87		
R722	68	R761	122		
R723	56	R762	123		
R725	110	R764	124		
R726	56	R766	87		
R728	68	R768	109		
R729	56	R770	70		
R731	114	R722	100		
R732	56	R774	125		
R734	45	S762	126		
R736	68	U520	127		
R738	115	U580	128		
R739	116	U650	128		
R741	66	U720	129		
R745	79	U774	129		
R747	117	VR570	130		
R748	118	VR708	131		
R750	119				
R751	120				
R753	121				

ELOPF010

Figure 6. Circuit Card Assembly A6 (Sheet 5 of 5)



## SECTION II

TM 11-6625-2733-24P/NAVELEX 0969-LP-170-1060/TO 33D7-49-84-4

(1) ILLUSTRATION		(2)	(3)	(4)	(5)	(6)	(7)	(8)
(a) FIG NO	(b) TEM NO	SMR CODE	NATIONAL STOCK NUMBER	FSCM	PART NUMBER	DESCRIPTION	U/A	QTY INC IN
						USABLE ON CODE		
						GROUP 05 CIRCUIT CARD ASSEMBLY A6		
6	1	PAHZZ	5910-00-477-7521	90201	TDC156M020FL	CAPACITOR, FIXED, ELE.....	EA	1
6	2	PAHZZ	5910-00-481-9152	72982	301-000U2M0101M	CAPACITOR, FIXED, CER.....	EA	4
6	3	PAHZZ	5910-01-075-9469	56289	1960105X0050MA1	CAPACITOR, FIXED, ELE.....	EA	11
6	4	PAHZZ	5910-00-879-6778	72982	374001COM180K	CAPACITOR, FIXED, CER.....	EA	1
6	5	PAHZZ	5910-00-368-2301	72982	0831522Z5D00271	CAPACITOR, FIXED, CER.....	EA	1
6	6	PAHZZ	5910-00-548-1037	56289	403637	CAPACITOR, FIXED, CER.....	EA	1
6	7	XDMZZ		72982	301-055COGO100F	CAPACITOR, FIXED, CER.....	EA	7
6	8	PAHZZ	5910-00-149-0629	90201	TDC475K01DEL	CAPACITOR, FIXED, ELE.....	EA	1
6	9	PAHZZ	5910-00-801-1005	72982	855-558Z5U-103Z	CAPACITOR, FIXED, ELE.....	EA	9
6	10	PAHZZ	5910-00-917-1867	04222	7001-1113	CAPACITOR, FIXED, CER.....	EA	1
6	11	PAHZZ	5910-00-801-3866	72982	308-000C0G0470K	CAPACITOR, FIXED, CER.....	EA	1
6	12	PAHZZ	5910-00-270-1262	74970	187-0109-005	CAPACITOR, VARIABLE.....	EA	2
6	13	PAHZZ	5910-00-054-0131	72136	DML5F950F500V	CAPACITOR, FIXED, MIC.....	EA	2
6	14	PAHZZ	5910-01-005-9253	56289	196D225X0020MA1	CAPACITOR, FIXED, ELE.....	EA	2
6	15	PAHZZ	5910-00-688-8702	91418	BX102P5014R9	CAPACITOR, FIXED, CER.....	EA	6
6	16	PAHZZ	5910-00-932-7113	72982	8131M031Z5U0105	CAPACITOR, FIXED, CER.....	EA	1
6	17	PAHZZ	5910-00-816-4158	81349	CC22UJ470F	CAPACITOR, FIXED, CER.....	EA	3
6	18	PAHZZ	5910-00-488-3245	72982	331-000C0M0-569	CAPACITOR, FIXED, CER.....	EA	1
6	19	PAHZZ	5910-00-879-6843	72982	374-001COM0549D	CAPACITOR, FIXED, CER.....	EA	1
6	20	PAHZZ	5910-00-451-3209	12954	D22C35M1	CAPACITOR, FIXED, ELE.....	EA	2
6	21	PAHZZ	5910-00-007-0803	56289	196D336X0010KA1	CAPACITOR, FIXED, ELE.....	EA	1
6	22	PAHZZ	5961-00-105-7681	01295	1M6152R	SEMICONDUCTOR DEVIC.....	EA	29
6	23	PAHZZ	5961-00-908-7598	14433	G066	SEMICONDUCTOR DEVIC.....	EA	3
6	24	PAHZZ	5961-00-247-6351	04713	SS01150	SEMICONDUCTOR DEVIC.....	EA	1
6	25	PAHZZ	5950-00-402-8002	80009	108-0333-00	COIL, RADIO FREQUENC.....	EA	2
6	26	PAHZZ	5961-00-931-0372	04713	SPS6868K	TRANSISTOR.....	EA	2
6	27	PAHZZ	5961-00-892-8706	07263	S032677	TRANSISTOR.....	EA	9
6	28	PAHZZ	5961-00-925-3777	81349	JAN2N2907A	TRANSISTOR.....	EA	1
6	29	PAHZZ	5961-00-780-8368	07263	S024849	TRANSISTOR.....	EA	5
6	30	PAHZZ	5961-00-404-6720	07263	S024848	TRANSISTOR.....	EA	8
6	31	PAHZZ	5961-01-045-0007	34148	S036228	TRANSISTOR.....	EA	5
6	32	PAHZZ	5961-00-365-9939	17856	J2133	TRANSISTOR.....	EA	1
6	33	PAHZZ	5961-00-879-7461	04713	SPS8801	TRANSISTOR.....	EA	2
6	34	PAHZZ	5961-00-257-1044	04713	SS106	TRANSISTOR.....	EA	1
6	35	PAHZZ	5961-00-497-9207	07263	S39288	TRANSISTOR.....	EA	2
6	36	PAHZZ	5961-00-350-2246	04713	SPS8803	TRANSISTOR.....	EA	2
6	37	PAHZZ	5961-00-488-9927	01295	SKA3310	TRANSISTOR.....	EA	1
6	38	PAHZZ	5961-00-232-7324	07263	S24850	TRANSISTOR.....	EA	1
6	39	PAHZZ	5905-00-911-3754	01121	CB9125	RESISTOR, FIXED, COMP.....	EA	1

## SECTION II

TM 11-6625-2733-24P/NAVELEX 0969-LP-170-1060/TO 33D7-49-84-4 -84-4

(1) ILLUSTRATION (a) FIG NO	(2) ITEM NO	(3) SMR CODE	(4) NATIONAL STOCK NUMBER	(5) FSCM	(6) PART NUMBER	(7) DESCRIPTION USABLE ON CODE	(8) QTY INC IN
6	40	PAHZZ	5905-00-907-4119	01121	CB3935	RESISTOR, FIXED, COMP.....	EA 1
6	41	PAHZZ	5905-00-228-5506	81349	RCR07G622JS	RESISTOR, FIXED, COMP.....	EA 2
6	42	PAHZZ		01121	CB1015	RESISTOR, FIXED, COMP.....	EA 2
6	43	PAHZZ	5905-00-119-8811	81349	RCR07G151JS	RESISTOR, FIXED, COMP.....	EA 2
6	44	PAHZZ	5905-00-434-5073	91637	MFF1816G17801F	RESISTOR, FIXED, FILM.....	EA 1
6	45	PAHZZ	5905-00-116-2394	A1997	N400-512-056	RESISTOR, FIXED, COMP.....	EA 6
6	46	PAHZZ	5905-00-766-9392	01121	CB4315	RESISTOR, FIXED, COMP.....	EA 1
6	47	PAHZZ	5905-00-905-6279	01121	CB1825	RESISTOR, FIXED, COMP.....	EA 1
6	48	PAHZZ	5905-00-021-6494	91637	MFF1816G24900F	RESISTOR, FIXED, FILM.....	EA 1
6	49	PAHZZ	5905-00-918-6522	01121	CB8215	RESISTOR, FIXED, COMP.....	EA 1
6	50	PAHZZ	5905-00-097-9533	01121	CB1025	RESISTOR, FIXED, COMP.....	EA 16
6	51	PAHZZ	5905-00-141-0743	81349	RCR07G392JS	RESISTOR, FIXED, COMP.....	EA 1
6	52	PAHZZ	5905-00-911-3753	01121	CB4725	RESISTOR, FIXED, COMP.....	EA 3
6	53	PAHZZ	5905-00-435-1718	01121	CB2415	RESISTOR, FIXED, COMP.....	EA 3
6	54	PAHZZ	5905-00-907-4118	01121	CB3915	RESISTOR, FIXED, COMP.....	EA 3
6	55	PAHZZ	5905-00-104-8358	01121	CB8225	RESISTOR, FIXED, COMP.....	EA 1
6	56	PAHZZ	5905-00-959-1202	01121	CB1045	RESISTOR, FIXED, COMP.....	EA 7
6	57	PAHZZ	5905-00-904-5676	01121	CB1245	RESISTOR, FIXED, COMP.....	EA 1
6	58	PAHZZ	5905-00-114-0710	81349	RCR07G331JS	RESISTOR, FIXED, COMP.....	EA 2
6	59	PAHZZ	5905-00-113-4860	01121	CB2705	RESISTOR, FIXED, COMP.....	EA 3
6	60	XDHZZ	5905-00-126-6692	81349	RCR07G620JS	RESISTOR, FIXED, COMP.....	EA 2
6	61	PAHZZ	5905-01-031-0439	75042	CECTO-9760F	RESISTOR, FIXED, FILM.....	EA 1
6	62	PAHZZ	5905-00-250-6216	81349	RMC55K3240FS	RESISTOR, FIXED, FILM.....	EA 1
6	63	PAHZZ	5905-00-126-6683	A1997	N400-512-075	RESISTOR, FIXED, COMP.....	EA 1
6	64	PAHZZ	5905-00-106-1356	81349	RCR07G152JS	RESISTOR, FIXED, COMP.....	EA 1
6	65	PAHZZ	5905-00-102-5289	01121	CB2025	RESISTOR, FIXED, COMP.....	EA 9
6	66	PAHZZ	5905-00-922-9925	91637	MFF1816G49900F	RESISTOR, FIXED, FILM.....	EA 4
6	67	PAHZZ	5905-00-434-5068	91637	MFF1816G10001F	RESISTOR, FIXED, FILM.....	EA 1
6	68	PAHZZ	5905-00-909-3885	01121	CB1035	RESISTOR, FIXED, COMP.....	EA 10
6	69	PAHZZ	5905-01-084-1900	32997	3386F-T04-501	RESISTOR, VARIABLE, N.....	EA 1
6	70	PAHZZ	5905-00-136-8431	A1997	N400-512-078	RESISTOR, FIXED, COMP.....	EA 2
6	71	PAHZZ	5905-00-904-5689	01121	CB1535	RESISTOR, FIXED, COMP.....	EA 3
6	72	PAHZZ	5905-00-111-4727	81349	RCR07G272JS	RESISTOR, FIXED, COMP.....	EA 1
6	73	PAHZZ	5905-00-911-3752	01121	CB4715	RESISTOR, FIXED, COMP.....	EA 3
6	74	PAHZZ	5905-00-434-5053	91637	MFF1816G12100F	RESISTOR, FIXED, FILM.....	EA 1
6	75	PAHZZ	5905-01-084-5941	80294	3386F-T04-203	RESISTOR, VARIABLE, N.....	EA 2
6	76	PAHZZ	5905-00-801-0450	01121	CB3045	RESISTOR, FIXED, COMP.....	EA 1
6	77	PAHZZ	5905-00-911-3779	01121	CB7525	RESISTOR, FIXED, COMP.....	EA 6
6	78	PAHZZ	5905-00-913-9415	01121	CB5635	RESISTOR, FIXED, COMP.....	EA 1
6	79	PAHZZ	5905-00-136-3891	01121	CB6215	RESISTOR, FIXED, COMP.....	EA 3

## SECTION II

TM 11-6625-2733-24P/NAVELEX 0969-LP-170-1060/TO 33D7-4984-4

(1) ILLUSTRATION		(2)	(3)	(4)	(5)	(6) DESCRIPTION	(7)	(8)
(A) FIG NO	(B) TEM NO	SMR CODE	NATIONAL STOCK NUMBER	FSCM	PART NUMBER	USABLE ON CODE	U/I	QTY INC IN UNIT
6	80	PAHZZ	5905-00-104-8363	01121	C88205	RESISTOR, FIXED, COMP.....	EA	2
6	81	PAHZZ	5905-00-122-0004	01121	C84335	RESISTOR, FIXED, COMP.....	EA	2
6	82	PAHZZ	5905-00-048-6797	32997	3386F-T04-104	RESISTOR, VARIABLE, N.....	EA	2
6	83	PAHZZ	5905-00-104-8370	81349	RCR07G361JS	RESISTOR, FIXED, COMP.....	EA	1
6	84	PAHZZ	5905-00-763-4656	75042	CEBTO-1501F	RESISTOR, FIXED, FILM.....	EA	1
6	85	PAHZZ	5905-00-111-4750	81349	RCR07G301JS	RESISTOR, FIXED, COMP.....	EA	1
6	86	PAHZZ	5905-00-432-0420	81349	RNC55K4990FS	RESISTOR, FIXED, FILM.....	EA	2
6	87	PAHZZ	5905-00-109-9823	91637	MFF1816G340ROF	RESISTOR, FIXED, FILM.....	EA	3
6	88	PAHZZ	5905-00-919-5708	01121	C89105	RESISTOR, FIXED, COMP.....	EA	1
6	89	PAHZZ	5905-00-119-3505	81349	RCR07G683JS	RESISTOR, FIXED, COMP.....	EA	1
6	90	PAHZZ	5905-00-104-8360	81349	RCR07G623JS	RESISTOR, FIXED, COMP.....	EA	2
6	91	PAHZZ	5905-00-141-1295	81349	RCR07G243JS	RESISTOR, FIXED, COMP.....	EA	1
6	92	PAHZZ	5905-00-110-7622	81349	RCR07G682JS	RESISTOR, FIXED, COMP.....	EA	2
6	93	PAHZZ	5905-00-106-9356	A1997	N400-512-094	RESISTOR, FIXED, COMP.....	EA	1
6	94	PAHZZ	5905-00-919-5713	01121	C81225	RESISTOR, FIXED, COMP.....	EA	1
6	95	PAHZZ	5905-00-106-1278	81349	RCR07G123JS	RESISTOR, FIXED, COMP.....	EA	1
6	96	PAHZZ	5905-00-119-3503	81349	RCR07G271JS	RESISTOR, FIXED, COMP.....	EA	3
6	97	PAHZZ	5905-00-960-0099	00752	146493-1	RESISTOR, FIXED, COMP.....	EA	1
6	98	PAHZZ	5905-00-487-8296	32997	3386F-T04-102	RESISTOR, VARIABLE, N.....	EA	1
6	99	PAHZZ	5905-00-909-3919	01121	C82015	RESISTOR, FIXED, COMP.....	EA	1
6	100	PAHZZ	5905-00-131-9729	81349	RCR07G302JS	RESISTOR, FIXED, COMP.....	EA	3
6	101	PAHZZ	5905-00-104-8369	81349	RCR07G362JS	RESISTOR, FIXED, COMP.....	EA	2
6	102	PAHZZ	5905-00-106-1248	01121	C81625	RESISTOR, FIXED, COMP.....	EA	1
6	103	PAHZZ	5905-00-909-3954	01121	C83035	RESISTOR, FIXED, COMP.....	EA	1
6	104	PAHZZ	5905-00-441-7816	91637	MFF1816G976ROF	RESISTOR, FIXED, FILM.....	EA	1
6	105	PAHZZ	5905-00-909-3834	01121	C85105	RESISTOR, FIXED, COMP.....	EA	2
6	106	PAHZZ	5905-00-018-0860	01121	E81335	RESISTOR, FIXED, COMP.....	EA	1
6	107	PAHZZ	5905-01-064-9047	91637	MFF1816G60400F	RESISTOR, FIXED, FILM.....	EA	3
6	108	PAHZZ	5905-00-911-3811	01121	C82425	RESISTOR, FIXED, COMP.....	EA	1
6	109	PAHZZ	5905-00-138-3291	81349	RNC55J2001BS	RESISTOR, FIXED, FILM.....	EA	3
6	110	PAHZZ	5905-00-426-7760	91637	MFF1816G24901F	RESISTOR, FIXED, FILM.....	EA	2
6	111	PAHZZ	5905-00-021-6497	91637	MFF1816G49902F	RESISTOR, FIXED, FILM.....	EA	1
6	112	XDHZZ	5905-00-426-7779	91637	MFF1816G49901F	RESISTOR, FIXED, FILM.....	EA	2
6	113	PAHZZ	5905-00-164-1753	81349	RNC55K6340FS	RESISTOR, FIXED, FILM.....	EA	1
6	114	PAHZZ	5905-00-911-3815	01121	C82735	RESISTOR, FIXED, COMP.....	EA	1
6	115	PAHZZ	5905-00-140-7069	81349	RNC60K2151FS	RESISTOR, FIXED, FILM.....	EA	1
6	116	PAHZZ	5905-00-721-3703	81349	RNC55K2320FS	RESISTOR, FIXED, FILM.....	EA	1
6	117	PAHZZ	5905-00-879-7815	91637	MFF1816G14000F	RESISTOR, FIXED, FILM.....	EA	1
6	118	PAHZZ	5905-00-405-7969	91637	MFF1816G845ROF	RESISTOR, FIXED, FILM.....	EA	1
6	119	PAHZZ	5905-00-285-0422	81349	RNC60K1911FS	RESISTOR, FIXED, FILM.....	EA	1

## SECTION II

TM 11-6625-2733-24P/NAVELEX 0969-LP-170-1060/TO 33D7-49-84-4 84-4

(1)	(2)	(3)	(4)	(5)	(6)	(7)	(8)	
LUSTI	ION				DESCRIPTION		QTY	
(a)	(b)	SMR	NATIONAL	FSCM	PART	USABLE ON CODE	INC	
FIG	EM	CODE	STOCK		NUMBER		IN	
NO	IO		NUMBER				UNIT	
6	120	PAHZZ	905-00-189-2466	81349	RNC60K2801FS	RESISTOR, FIXED, FILM.....	EA	1
6	121	PAHZZ	905-00-359-4133	01121	C89125	RESISTOR, FIXED, FILM.....	EA	1
6	122	PAHZZ	905-01-044-8432	91637	MFF1816G38R30F	RESISTOR, FIXED, FILM.....	EA	1
6	123	PAHZZ	905-01-084-2923	32997	3386F-T04-500	RESISTOR, VARIABLE, N.....	EA	1
6	124	PAHZZ	905-00-900-1211	91637	RS2B-817500F	RESISTOR, FIXED, WIRE.....	EA	1
6	125	PAHZZ	905-00-112-1292	81349	RNC55K47R5FS	RESISTOR, FIXED, FILM.....	EA	1
6	126	PAHZZ	930-00-443-9630	80009	260-1208-00	SWITCH, PUSH.....	EA	1
6	127	PAHZZ	962-00-378-0348	80009	155-0049-02	MICROCIRCUIT, DIGITA.....	EA	1
6	128	PAHZZ	962-01-092-3636	80009	155-0028-00	MICROCIRCUIT, LINEAR.....	EA	2
6	129	PAHZZ	962-00-412-1023	02735	CA3046	MICROCIRCUIT, LINEAR.....	EA	2
6	130	PAHZZ	961-00-866-5454	81349	JAMIN821	SEMICONDUCTOR DEVIC.....	EA	1
6	131	PAHZZ	961-00-436-2886	04713	S213903	SEMICONDUCTOR DEVIC.....	EA	1
6	132	PAHZZ	935-01-044-5623	73803	CS9002-20	SOCKET, PLUG-IN ELEC.....	EA	1
6	133	PAHZZ	999-00-551-9433	22526	47357	CONTACT, ELECTRICAL.....	EA	12
6	134	PAHZZ	935-00-487-8261	71785	133-99-12-064	SOCKET, PLUG-IN ELEC.....	EA	2
6	135	PAHZZ	999-00-394-0383	05820	20558	HEAT SINK, ELECTRICAL.....	EA	2
6	136	XDHZZ		80009	352-0240-00	HANGER, CABLE.....	EA	2
6	137	XDHZZ		80009	214-0579-02	TERM, TEST POINT.....	EA	15
6	138	XDHZZ		80009	388-2425-01	PRINTED WIRING.....	EA	1
6	139	PAHZZ	935-01-081-0156	73803	CS9002-14	SOCKET, PLUG-IN ELEC.....	EA	2
6	140	PAHZZ		22526	75060-012	SOCKET, PIN CONNECTO.....	EA	123
6	141	PAHZZ	999-01-074-8807	22546	75302-001	CONTACT, ELECTRICAL.....	EA	49
6	142	PAHZZ	999-00-285-2987	26512	G T80SEC2	CONTACT, ELECTRICAL.....	EA	1
6	143	XDHZZ		80009	386-2141-00	SPRT, EXT SHAFT.....	EA	1
6	144	PAHZZ	5365-00-816-0002	80009	361-0007-00	SPACER, SLEEVE.....	EA	1



REFERENCE DESIGNATION-T0-ITEM NUMBER TABLE

REF DES	ITEM NO.	REF DES	ITEM NO.	REF DES	ITEM NO.
C305	1	R312	21	R435	37
C310	2	R313	20	R440	30
C312	1	R315	18	R444	30
C317	3	R317	22	R452	31
C323	4	R320	23	R453	20
C330	5	R321	24	R454	32
C350	5	R322	23	R455	31
C370	6	R325	25	R456	18
C372	6	R326	26	R457	38
C374	6	R328	25	R460	33
C405	1	R329	27	R462	38
C410	2	R330	19	R463	22
C411	7	R332	28	R464	39
C412	1	R333	29	R465	34
C417	3	R335	28	R466	40
C423	8	R340	30	U350	41
C430	5	R344	30	U450	41
C450	5	R352	31		
C468	3	R353	20		
CR306	9	R354	32		
CR307	9	R355	31		
CR406	9	R358	33		
CR407	9	R360	15		
CR468	9	R362	28		
CR469	9	R363	22		
Q310	10	R364	34		
Q311	10	R365	35		
Q315	11	R366	36		
Q320	12	R401	15		
Q322	12	R403	16		
0352	13	R405	17		
0355	13	R406	18		
Q362	12	R410	19		
Q410	10	R411	20		
Q411	10	R412	21		
Q415	11	R413	20		
Q420	12	R415	18		
Q422	12	R417	22		
Q452	13	R420	23		
Q455	13	R421	24		
Q456	14	R422	23		
Q462	12	R425	25		
R301	15	R426	26		
R303	16	R428	25		
R305	17	R429	27		
R306	18	R430	19		
R310	19	R432	35		
R311	20	R433	29		

SECTION II

TM 11-6625-2733-24P/NAVELEX 0969-LP-170-1060/TO 33D7-49-84-4

(1) LIST (B) FIG NO	(2) ION (D) EM NO	(3) SMR CODE	(4) NATIONAL STOCK NUMBER	(5) FSCM	(5) PART NUMBER	(6) DESCRIPTION	(7) USABLE ON CODE	(7) U/M	(8) QTY INC IN UNIT
GROUP 06 CIRCUITCARD ASSEMBLY A4									
7	1	XDHZZ	910-00-782-7614	56289	33C 158	CAPACITOR, FIXED, CER.....		EA	4
7	2	PAHZZ	910-00-688-8702	91418	BX102P5014R9	CAPACITOR, FIXED, CER.....		EA	2
7	3	PAHZZ	910-00-721-2030	72982	811-546E103Z	CAPACITOR, FIXED, CER.....		EA	3
7	4	PAHZZ	910-00-903-8336	72982	301-000C0G0220K	CAPACITOR.....		EA	1
7	5	PAHZZ	910-00-372-0582	72982	8131N075E474M	CAPACITOR, FIXED, CER.....		EA	4
7	6	PAHZZ	910-01-086-6378	56289	S03D475G035KA	CAPACITOR, FIXED, ELE.....		EA	3
7	7	PAHZZ	910-00-681-9152	72982	301-000U2M0101M	CAPACITOR, FIXED, CER.....		EA	2
7	8	PAHZZ	910-00-430-5750	72982	301-000C0G0150J	CAPACITOR, FIXED, CER.....		EA	1
7	9	PAHZZ	961-00-105-7681	01295	1N4152R	SEMICONDUCTOR DEVIC.....		EA	6
7	10	PAHZZ	961-00-436-3317	01295	SKA5390	TRANSISTOR.....		PR	2
7	11	PAHZZ	961-01-045-0007	34148	S036228	TRANSISTOR.....		EA	2
7	12	PAHZZ	961-00-404-6720	07263	S04848	TRANSISTOR.....		EA	6
7	13	PAHZZ	961-01-115-5168	04713	SPS8006	TRANSISTOR.....		EA	4
7	14	PAHZZ	961-00-892-8706	07263	S032677	TRANSISTOR.....		EA	1
7	15	PAHZZ	5905-00-909-3834	01121	C85105	RESISTOR, FIXED, COMP.....		EA	3
7	16	PAHZZ	5905-00-021-6497	91637	MFF1816G4990ZF	RESISTOR, FIXED, FILM.....		EA	2
7	17	PAHZZ	5905-00-097-9533	01121	C81025	RESISTOR, FIXED, COMP.....		EA	2
7	18	PAHZZ	5905-00-102-5289	01121	C82025	RESISTOR, FIXED, COMP.....		EA	5
7	19	PAHZZ	5905-00-116-2394	A1997	N400-512-056	RESISTOR, FIXED, COMP.....		EA	4
7	20	PAHZZ		01121	C81015	RESISTOR, FIXED, COMP.....		EA	6
7	21	PAHZZ	5905-00-766-9392	01121	C84315	RESISTOR, FIXED, COMP.....		EA	2
7	22	PAHZZ	5905-00-918-6522	01121	C88215	RESISTOR, FIXED, COMP.....		EA	4
7	23	PAHZZ	5905-00-119-8812	A 1997	N400-512-041	RESISTOR, FIXED, COMP.....		EA	4
7	24	PAHZZ	5905-00-104-8363	01121	C88205	RESISTOR, FIXED, COMP.....		EA	2
7	25	PAHZZ	5905-00-106-9357	01121	C87505	RESISTOR, FIXED, COMP.....		EA	4
7	26	PAHZZ	5905-00-905-6279	01121	C81825	RESISTOR, FIXED, COMP.....		EA	2
7	27	PAHZZ	5905-00-135-6045	A 1997	N400-512-027	RESISTOR, FIXED, COMP.....		EA	2
7	28	PAHZZ	5905-00-911-3753	01121	C84725	RESISTOR, FIXED, COMP.....		EA	3
7	29	PAHZZ	5905-01-084-0761	32997	3386F-T04-103	RESISTOR, VARIABLE, N.....		EA	2
7	30	XDHZZ	5905-00-106-3668	81349	RCR07G220JS	RESISTOR, FIXED, COMP.....		EA	4
7	31	PAHZZ	5905-00-105-7764	81349	RCR07G222JS	RESISTOR, FIXED, COMP.....		EA	4
7	32	PAHZZ	5905-00-119-8811	81349	RCR07G151JS	RESISTOR, FIXED, COMP.....		EA	2
7	33	PAHZZ	5905-00-909-3919	01121	C82015	RESISTOR, FIXED, COMP.....		EA	2
7	34	PAHZZ	5905-00-136-8431	A1997	N400-512-078	RESISTOR, FIXED, COMP.....		EA	2
7	35	PAHZZ	5905-00-911-3811	01121	C82425	RESISTOR, FIXED, COMP.....		EA	2
7	36	PAHZZ	5905-00-106-1248	01121	C81625	RESISTOR, FIXED, COMP.....		EA	1
7	37	PAHZZ	5905-00-126-6683	A1997	N400-512-075	RESISTOR, FIXED, COMP.....		EA	1
7	38	PAHZZ	5905-00-909-3885	01121	C81035	RESISTOR, FIXED, COMP.....		EA	2
1	39	PAHZZ	5905-00-911-3754	01121	C85125	RESISTOR, FIXED, COMP.....		EA	1

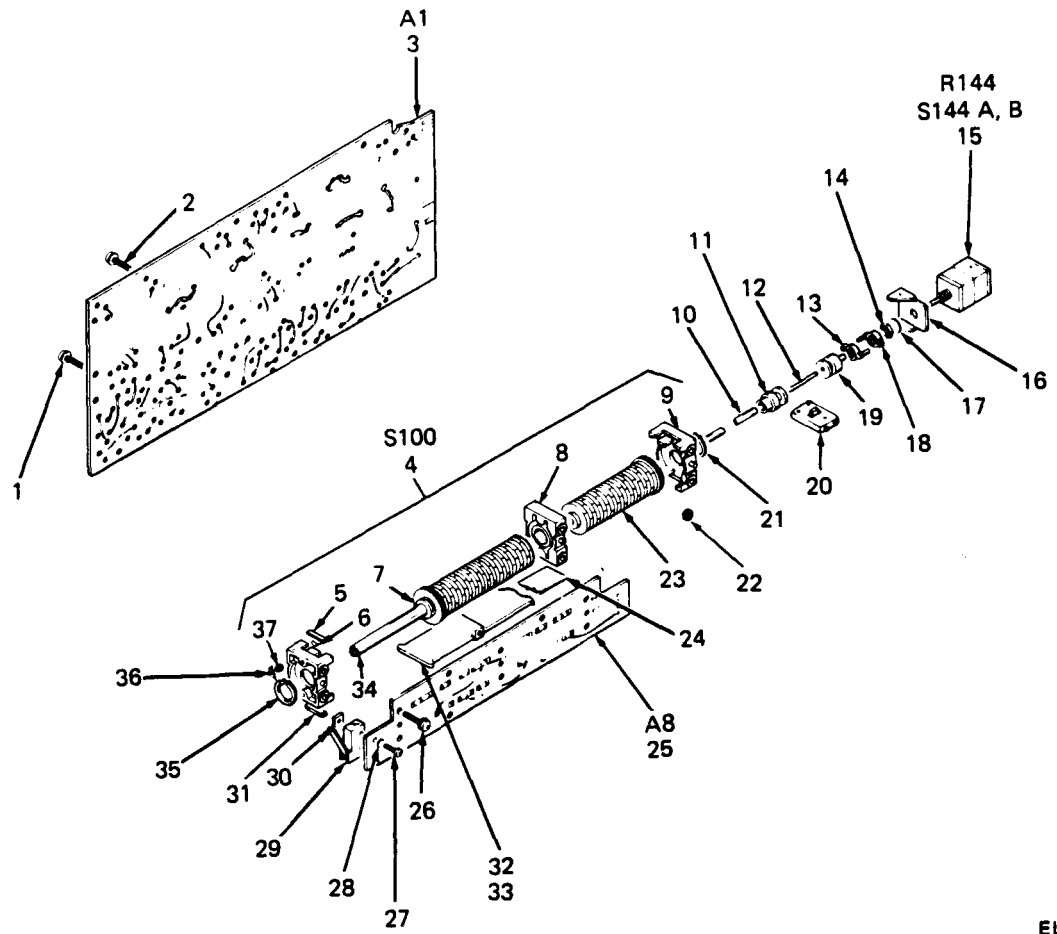
SECTION II

TM 11-6625-2733-24P/HAVELEX 0969-LP-170-1060/TO 33D7-49-84-4

(1) ILLUSTRATION		(2)	(3)	(4)	(5)	(6)	(7)	(8)
(8) FIG NO	(b) ITEM NO	SMR CODE	NATIONAL STOCK NUMBER	FSCM	PART NUMBER	DESCRIPTION	USABLE ON CODE	QTY INC IN
7	4c	AHZZ	1905-00-106-135	1134	CR 07G152J5	RESISTOR, FIXED, COMP.....		1
7	4d	AHZZ	1962-01-048-128	1000	55-0109-01	MICROCIRCUIT, LINEAR.....		2
7	4e	AHZZ	1999-00-275-021	2521	7350	CONTACT, ELECTRICAL.....		2
7	4f	DHZZ		1000	88-2426-01	PRINTED WIRING.....		1
7	4g	AHZZ	1999-00-551-943	2521	7357	CONTACT, ELECTRICAL.....		11
7	4h	DHZZ	1961-01-038-207		00-0945-00	HOLDER, SEMICONDUCTO.....		2
7	4i	AHZZ	1305-00-245-488	1000	11-0001-00	SCREEN, MACHINE.....		2
7	4j	DHZZ	1961-01-038-207		00-0945-01	HOLDER, SEMICONDUCTO.....		2
7	4k	AHZZ	1935-01-067-124	7380	59002-16	SOCKET, PLUG-IN ELEC.....		2
7	4l	AHZZ		2521	5060-012	SOCKET, PIN CONNec TO.....		51
7	5a	AHZZ	1999-01-074-880	2544	5302-001	CONTACT, ELECTRICAL.....		9
7	5b	AHZZ	1940-00-935-831	1000	14-0579-00	TERMINAL, LUG.....		3







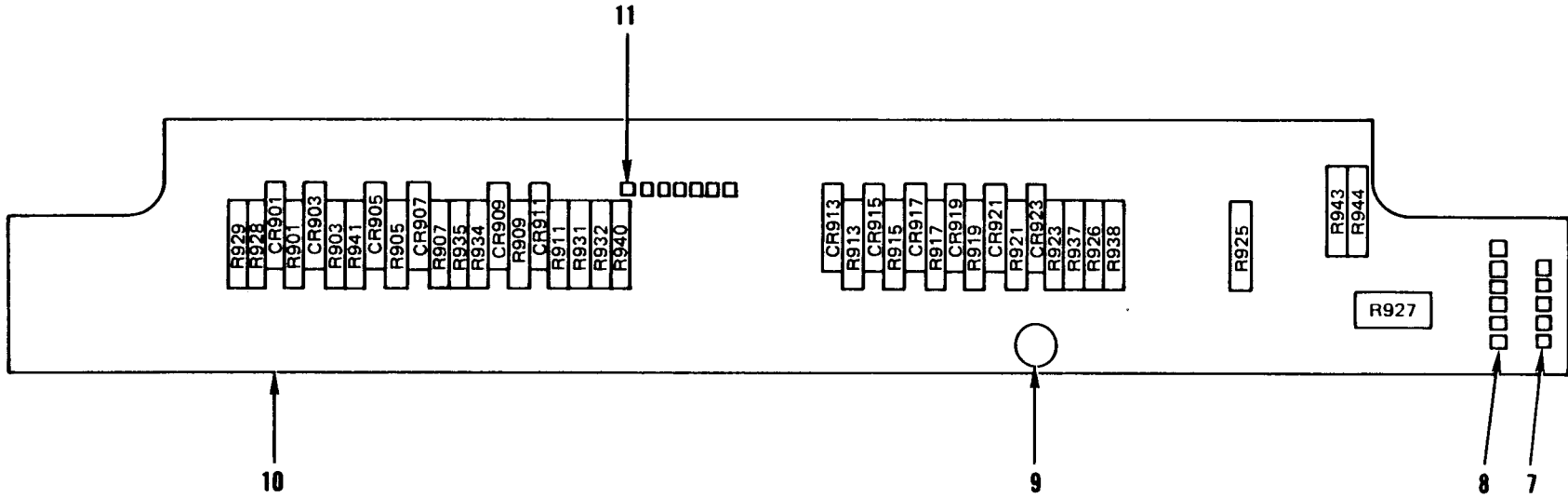
ELOPF013

Figure 8. Circuit Card Assembly

SECTION II

TM 11-6625-2733-24P/NAVELEX 0969-LP-170-1060/TO 33D7-49-84-4

(1) ILLUSTRATION		(2) SMR CODE	(3) NATIONAL STOCK NUMBER	(4) FSCM	(5) PART NUMBER	(6) DESCRIPTION	(7) U/A	(8) QTY INC IN UNIT
(a) FIG NO.	(b) EM O					USABLE ON CODE		
GROUP 08 CIRCUIT CARD ASSEMBLY								
8	1	PAHZZ	305-00-005-8245	80009	211-0116-00	SCREW, ASSEMBLED WAS.....	EA	6
8	2	PAHZZ	305-00-005-8245	80009	211-0116-00	SCREW, ASSEMBLED WAS.....	EA	4
8	3	PAMHH		80009	670-2257-04	CIRCUIT CARD ASSEMB.....	EA	1
8	4	XDHMM		80009	263-1099-00	ACTRASSY, CAMS.....	EA	1
8	5	PAHZZ	1360-00-480-3639	80009	214-1139-02	SPRING, FLAT.....	EA	2
8	6	XDHZZ	1920-01-054-4903	80009	214-1752-00	ROLLER, DETENT.....	EA	4
8	7	XDMZZ		80009	105-0386-01	DRUM, CAM SWITCH.....	EA	1
8	8	XDHZZ	1625-01-013-0469	80009	401-0178-00	BEARING, CAM SWITCH.....	EA	1
8	9	XDHZZ	1625-01-013-0470	80009	401-0180-00	BEARING, CAM SWITCH.....	EA	2
8	10	XDHZZ		80009	384-0882-02	SHAFT, CAM SW.....	EA	1
8	11	XDHZZ		80009	376-0129-01	SWITCH, ROTARY.....	EA	1
8	12	XDHZZ		80009	384-1153-00	EXTENSION SHAFT.....	EA	1
8	13	XDHZZ		80009	376-0092-01	COUPLING, SHAFT.....	EA	1
8	14	PAHZZ	1310-00-231-4954	73743	2X-20319-402	NUT, PLAIN, HEXAGON.....	EA	1
8	15	PAHZZ	1905-00-488-7816	01121	14M411	RESISTOR, VARIABLE, N.....	EA	1
8	16	PAHZZ	1930-01-067-1112	80009	407-0803-00	BRACKET, ELECTRICAL.....	EA	1
8	17	PAHZZ	1310-00-193-6731	78189	1214-05-00-0541	WASHER, LOCK.....	EA	1
8	18	XDHZZ		80009	376-0092-03	COUPLING, SHAFT.....	EA	1
8	19	XDHZZ		80009	105-0340-00	ARM, SWITCH ACTUATOR.....	EA	1
8	20	PAHZZ	1930-00-368-1354	10389	23-021-043	SWITCH, SLIDE.....	EA	2
8	21	PAHZZ	1325-00-937-2211	80009	348-0056-00	GROMMET, NONMETALLIC.....	EA	1
8	22	XDHZZ	1310-00-407-4600	73743	2X-12161-402	NUT, PLAIN, HEXAGON.....	EA	10
8	23	XDHZZ		80009	105-0387-01	ACTUATOR, CAM SW.....	EA	1
8	24	XDHZZ		80009	334-3448-00	MARKER, IDENT.....	EA	1
8	25	PAMHH	1625-01-118-4865	80009	670-2258-02	CIRCUIT CARD ASSEMB.....	EA	1
8	26	PAHZZ	3305-00-005-8245	80009	211-0116-00	SCREW, ASSEMBLED WAS.....	EA	10
8	27	XDMZZ		80009	211-0185-00	SCREW, MACHINE.....	EA	2
8	28	XDMZZ		80009	210-0850-00	WASHER, FLAT.....	EA	2
8	29	PAHZZ	1930-00-597-4964	01963	E63-10M	SWITCH, SENSITIVE.....	EA	1
8	30	XDMZZ		80009	220-0619-00	NUT STRIP.....	EA	1
8	31	PAHZZ	1360-00-447-8721	80009	214-1139-03	SPRING, FLAT.....	EA	2
8	32	XDMZZ		80009	200-1440-00	COVER, CAM SW.....	EA	2
8	33	XDHZZ	1310-00-407-4600	73743	2X-12161-402	NUT, PLAIN, HEXAGON.....	EA	4
8	34	XDHZZ		80009	384-0878-04	SHAFT, CAM SW.....	EA	1
8	35	XDHZZ		97464	3100-37-CD	RING, RETAINING.....	EA	1
8	36	PAHZZ	1990-00-481-4821	80009	131-0963-00	CONTACT, ELECTRICAL.....	EA	1
8	37	XDHZZ	1310-00-407-4600	73743	2X-12161-402	NUT, PLAIN, HEXAGON.....	EA	5



REFERENCE DESIGNATION-TO-ITEM NUMBER TABLE

REF DES	ITEM NO.	REF DES	ITEM NO.	REF DES	ITEM NO.	REF DES	ITEM NO.	REF DES	ITEM NO.	REF DES	ITEM NO.
CR901	1	CR915	1	R905	4	R919	3	R929	6	R940	2
CR903	1	CR917	1	R907	3	R921	2	R931	3	R941	2
CR905	1	CR919	1	R909	3	R923	3	R932	3	R943	3
CR907	1	CR921	1	R911	2	R925	4	R934	2	R944	3
CR909	1	CR923	1	R913	2	R926	4	R935	2		
CR911	1	R901	2	R915	3	R927	5	R937	3		
CR913	1	R903	3	R917	4	R928	6	R938	3		

ELOPF014

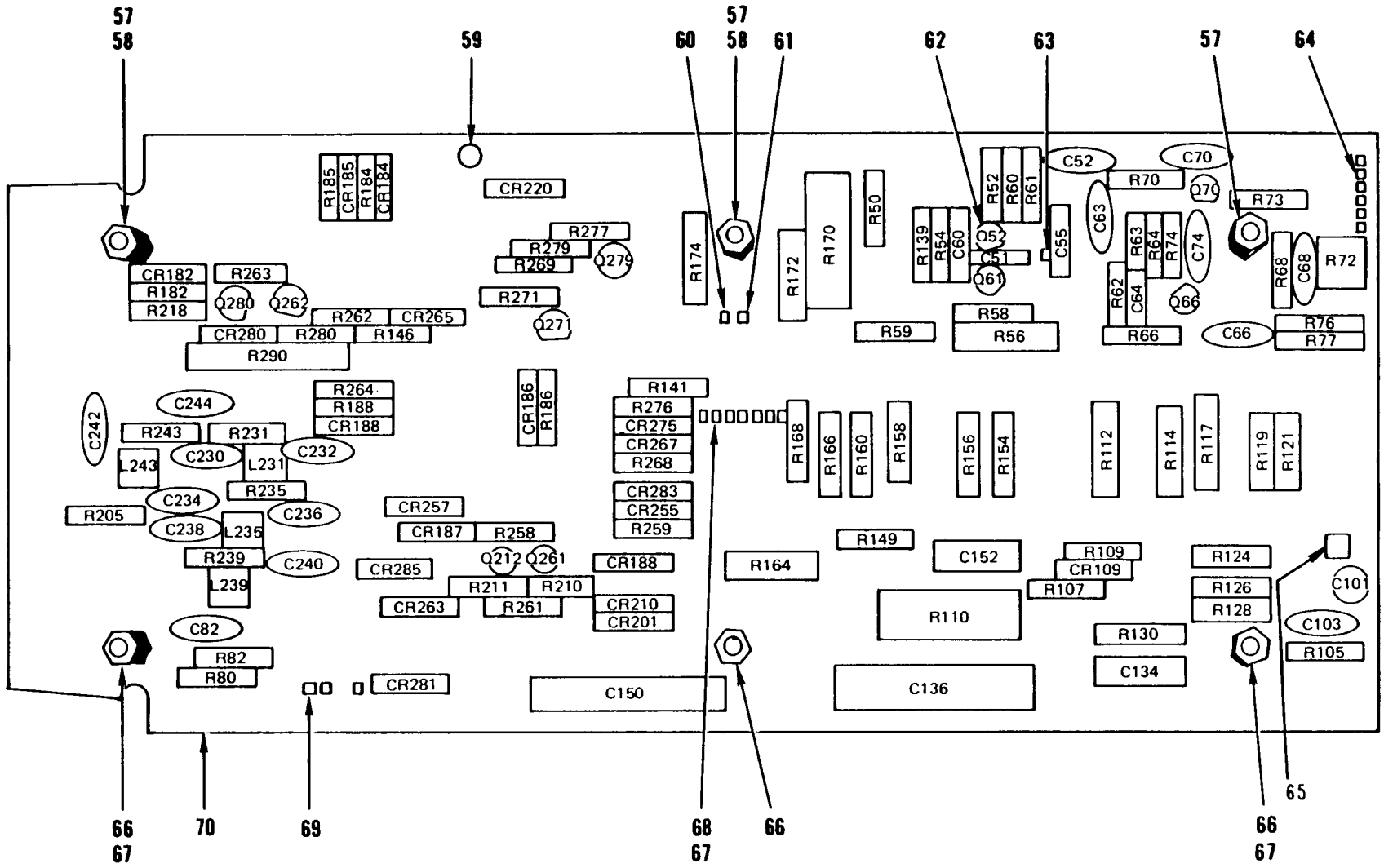
Figure 9. Circuit Card Assembly A8

SECTION II

TM 11-6625-2733-24P/NAVELEX 0969-LP-170-1060/TO 33D7-49-84-4

(1) ILLUSTRATION		(2)	(3)	(4)	(5)	(6)	(8)
(A) FIG NO	(B) ITEM NO	SMR CODE	NATIONAL STOCK NUMBER	FSCN	PART NUMBER	DESCRIPTION  USABLE ON CODE	QTY INC IN UNIT
GROUP 0801 CIRCUIT CARD ASSEMBLY A8							
9	1	PAHZZ	5961-00-908-759	1443	7866	SEMICONDUCTOR DEVIC.....	12
9	2	PAHZZ	5905-00-916-726	0112	787535	RESISTOR, FIXED, COMP.....	1
9	3	PAHZZ	5905-00-114-533	8134	ICR07G154JS	RESISTOR, FIXED, COMP.....	12
9	4	PAHZZ	5905-00-441-781	9163	IFF1816G37401F	RESISTOR, FIXED, FILM.....	4
9	5	PAHZZ	5905-00-119-881	8134	ICR07G151JS	RESISTOR, FIXED, COMP.....	1
9	6	PAHZZ	5905-00-136-389	8134	ICR07G513JS	RESISTOR, FIXED, COMP.....	2
9	7	PAHZZ	5999-00-275-021	2252	7350	CONTACT, ELECTRICAL.....	5
9	8	XDHZZ	5999-00-551-943	2252	7351 LOOSEPIECE	CONTACT, ELECTRICAL.....	4
9	9	XDHZZ			13-1001-000-47	TERMINAL, PIN.....	2
9	10	XDHZZ			188-2797-01	PRINTED WIRING.....	1
9	11	PAHZZ	5999-00-173-992		31-0604-00	CONTACT, ELECTRICAL.....	12





ELOPF016

Figure 10. Circuit Card Assembly A1 (Sheet 1 of 2)

REFERENCE DESIGNATION-TO-ITEM NUMBER TABLE

REF DES	ITEM NO.	REF DES	ITEM NO.	REF DES	ITEM NO.
C51	1	CR285	15	R126	45
C52	2	CR288	15	R128	46
C55	3	L231	17	R130	47
C60	1	L235	17	R139	31
C63	4	L239	17	R141	30
C64	5	L243	17	R 146	37
C66	2	Q52	18	R149	31
C68	2	Q61	18	R154	47
C70	2	Q66	19	R156	46
C74	2	Q70	20	R158	45
C82	2	Q212	21	R160	44
C101	6	Q261	22	R164	42
C103	7	Q262	21	R166	43
*	8	Q271	21	R168	43
C134	9	Q279	22	R170	40
C136	10	Q280	20	R172	41
C138	11	R 50	23	R174	41
C141	12	R52	24	R181	48
C150	10	R 54	25	R182	49
C152	9	R 56	26	R184	50
C230	13	R 58	25	R185	50
C232	14	R59	23	R186	50
C234	13	R60	27	R188	50
C236	14	R61	24	R205	51
C238	13	R62	28	R210	37
C240	14	R63	29	R211	52
C242	13	R 64	30	R231	30
C244	14	R66	30	R235	30
CR109	15	R67	31	R 239	30
CR182	16	R 68	32	R243	30
CR184	15	R70	30	R 258	53
CR185	15	R72	33	R259	54
CR186	15	R 73	34	R261	52
CR187	15	R74	35	R262	37
CR188	15	R76	31	R 263	52
CR201	15	R80	36	R 264	52
CR210	15	R82	30	R268	37
CR220	15	R105	37	R269	52
CR255	15	R107	38	R271	55
CR257	15	R109	39	R276	53
CR263	15	R110	40	R277	54
CR265	15	R112	41	R279	55
CR267	15	R114	41	R 280	37
CR275	15	R117	42	R281	52
CR280	15	R119	43	R 290	56
CR281	15	R121	43		
CR283	15	R124	44		

\*Cbsists of C134, C136, C138, C150, and C152.

ELOPF017

Figure 10. Circuit Card Assembly A1 (Sheet 2 of 2)



## SECTION II

TM 11-6625-2733-24P/NAVELEX 0969-LP-170-1060/TO 33D7-49-84-4

(1) ILLUSTRATION		(2)	(3)	(4)	(5)	(6)	(7)	(8)
(a) FIG NO	(b) ITEM NO	SMR CODE	NATIONAL STOCK NUMBER	FSCM	PART NUMBER	DESCRIPTION	USABLE ON CODE	QTY INC IN UNIT
GROUP 0803 CIRCUIT CARD ASSEMBLY A1								
10	1	PAHZZ	5910-00-226-0475	72982	301-000C0J0279C	CAPACITOR, FIXED, CER.....	EA	2
10	2	PAHZZ	5910-00-937-1329	56289	HY525	CAPACITOR, FIXED, CER.....	EA	6
10	3	PAHZZ	5910-00-436-5225	00853	D151E560F0	CAPACITOR.....	EA	1
10	4	PAHZZ	5910-00-913-9920	04222	7001-1375	CAPACITOR, FIXED, CER.....	EA	1
10	5	PAHZZ	5910-00-816-4158	81349	CC22UJ470F	CAPACITOR, FIXED, CER.....	EA	1
10	6	PAHZZ	5910-01-005-9253	56289	196D225X0020MA1	CAPACITOR, FIXED, ELE.....	EA	1
10	7	PAHZZ	5910-00-433-3955	72982	8121N153X7R0473M	CAPACITOR, FIXED, CER.....	EA	1
10	8	PAHZZ	5910-00-149-0628	80009	295-0156-00	CAPACITOR MATCHED.....	EA	1
10	9	PAHZZ		80009	285-0753-06	CAPACITOR, FIXED, PLA.....	EA	2
10	10	PAHZZ	5910-01-084-2932	80009	285-0895-00	CAPACITOR, FIXED, PLA.....	EA	2
10	11	PAHZZ	5910-01-004-9881	80009	285-0784-02	CAPACITOR, FIXED, PLA.....	EA	1
10	12	PAHZZ	5910-00-436-7154	72982	8121-N08825U104M	CAPACITOR.....	EA	1
10	13	PAHZZ	5910-00-688-8702	91418	BX102P5014R9	CAPACITOR, FIXED, CER.....	EA	4
10	14	PAHZZ	5910-00-113-5499	81349	M39014/02-1350	CAPACITOR, FIXED, CER.....	EA	4
10	15	PAHZZ	5961-00-105-7681	01295	1N6152R	SEMICONDUCTOR DEVIC.....	EA	20
10	16	PAHZZ	5961-00-908-7598	14433	G866	SEMICONDUCTOR DEVIC.....	EA	1
10	17	PAHZZ	5950-00-078-1510	80009	L20-0382-00	TRANSFORMER, RADIO F.....	EA	4
10	18	PAHZZ	5961-00-404-6720	07263	S024848	TRANSISTOR.....	EA	2
10	19	PAHZZ	5961-00-892-8706	07263	S032677	TRANSISTOR.....	EA	1
10	20	PAHZZ	5961-01-045-0007	34148	S036228	TRANSISTOR.....	EA	2
10	21	PAHZZ	5961-00-930-5325	07263	S040065	TRANSISTOR.....	EA	3
10	22	PAHZZ	5961-00-436-3286	07263	S038487	TRANSISTOR.....	EA	2
10	23	PAHZZ	5905-00-139-1678	81349	RNC55K53R6FS	RESISTOR, FIXED, FILM.....	EA	2
10	24	PAHZZ	5905-00-998-1796	91637	MFF1816G200R0F	RESISTOR, FIXED, FILM.....	EA	2
10	25	PAHZZ	5905-00-772-7106	91637	MFF1816G24R90F	RESISTOR, FIXED, FILM.....	EA	2
10	26	PAHZZ	5905-00-434-5080	75042	CECTO-3650F	RESISTOR, FIXED, FILM.....	EA	1
10	27	PAHZZ	5905-00-119-8812	A1997	N400-512-041	RESISTOR, FIXED, COMP.....	EA	1
10	28	PAHZZ	5905-00-116-8556	81349	RCR07G223JS	RESISTOR, FIXED, COMP.....	EA	1
10	29	PAHZZ	5905-00-426-7737	91637	MFF1816G28700F	RESISTOR, FIXED, FILM.....	EA	1
10	30	PAHZZ		01121	C81015	RESISTOR, FIXED, COMP.....	EA	9
10	31	PAHZZ	5905-00-909-3834	01121	C85105	RESISTOR, FIXED, COMP.....	EA	4
10	32	PAHZZ	5905-00-909-3919	01121	C82015	RESISTOR, FIXED, COMP.....	EA	1
10	33	PAHZZ	5905-01-098-1506	80294	3386F-T04-502	RESISTOR, VARIABLE, N.....	EA	1
10	34	PAHZZ	5905-01-090-2938	91637	MFF1816G23201F	RESISTOR, FIXED, FILM.....	EA	1
10	35	PAHZZ	5905-00-109-9848	91637	MFF1816G15000F	RESISTOR, FIXED, FILM.....	EA	1
10	36	PAHZZ	5905-00-911-3753	01121	C84725	RESISTOR, FIXED, COMP.....	EA	1
10	37	PAHZZ	5905-00-909-3885	01121	C81035	RESISTOR, FIXED, COMP.....	EA	6
10	38	PAHZZ	5905-00-104-8360	81349	RCR07G623JS	RESISTOR, FIXED, COMP.....	EA	1
10	39	PAHZZ	5905-00-252-1673	01121	C86245	RESISTOR, FIXED, COMP.....	EA	1

SECTION II

TM 11-6625-2733-24P/NAVELEX 0969-LP-170-1060/TO 33D7-49-84-4

(1) LUSTRATION		(2)	(3)	(4)	(5)	(6)	(7)	(8)
(a) FIG NO	(b) TEM NO	SMR CODE	STOCK NUMBER	FSCM	PART NUMBER	DESCRIPTION  USABLE ON CODE	U/M	QTY INC IN UNIT
10	40	PAHZZ		1637	HFF1-033514C	RESISTOR, FIXED, FILM.....	EA	2
10	41	PAHZZ	5905-00-622-0168	3888	PME 70-C 111748	RESISTOR, FIXED, FILM.....	EA	4
10	42	PAHZZ	5905-00-139-0350	1637	HFF1C33513B	RESISTOR, FIXED, FILM.....	EA	2
10	43	PAHZZ	5905-01-007-1324	1637	HMF 129C 11173B	RESISTOR, FIXED, FILM.....	EA	4
10	44	PAHZZ	5905-00-361-8550	0031	MF7CE55852B	RESISTOR, FIXED, FILM.....	EA	2
10	45	PAHZZ	5905-00-502-4236	9701	MF7CE22342B	RESISTOR, FIXED, FILM.....	EA	2
10	46	PAHZZ	5905-00-632-4193	9701	MF7CE11172B	RESISTOR, FIXED, FILM.....	EA	2
10	47	PAHZZ	5905-01-007-1328	0031	MF7CE55851B	RESISTOR, FIXED, FILM.....	EA	2
10	48	PAHZZ	5905-00-119-8811	11349	RCR07G151JS	RESISTOR, FIXED, COMP.....	EA	1
10	49	PAHZZ	5905-00-911-3792	1121	C8L335	RESISTOR, FIXED, COMP.....	EA	1
10	50	PAHZZ	5905-00-126-6683	1997	N400-512-075	RESISTOR, FIXED, COMP.....	EA	4
10	51	PAHZZ	5905-00-104-8368	11349	RCR07G470JS	RESISTOR, FIXED, COMP.....	EA	1
10	52	PAHZZ	5905-00-106-9356	1997	N400-512-094	RESISTOR, FIXED, COMP.....	EA	6
10	53	PAHZZ	5905-00-111-4727	11349	RCR07G272JS	RESISTOR, FIXED, COMP.....	EA	2
10	54	PAHZZ	5905-00-102-5289	1121	C82025	RESISTOR, FIXED, COMP.....	EA	2
10	55	PAHZZ	5905-00-959-1202	1121	C8L045	RESISTOR, FIXED, COMP.....	EA	2
10	56	PAHZZ	5905-00-240-6761	2997	3059Y-J53-501	RESISTOR, VARIABLE, N.....	EA	1
10	57	PAHZZ	5310-01-033-9624	0009	129-0308-00	NUT, PLAIN, CONESEAT.....	EA	3
10	58	XDHZZ		10009	129-0339-00	CONTACT, ELECTRICAL.....	EA	3
10	59	PAHZZ	5940-00-935-8313	0009	214-0579-00	TERMINAL, LUG.....	EA	2
10	60	XDHZZ	5999-00-551-9434	2526	47351L00SEPIECE	CONTACT, ELECTRICAL.....	EA	3
10	61	XDHZZ		2526	47358	TERMINAL, PIN.....	EA	1
10	62	PAHZZ	5935-01-022-2968	0009	136-0350-00	SOCKET, TRANSISTOR.....	EA	10
10	63	PAHZZ	5999-00-396-6336	2526	47355	CONTACT, ELECTRICAL.....	EA	7
10	64	PAHZZ	5999-00-551-9433	2526	47357	CONTACT, ELECTRICAL.....	EA	42
10	65	PAHZZ	5999-00-275-0213	2526	47350	CONTACT, ELECTRICAL.....	EA	2
10	66	PAHZZ	5310-01-033-9624	10009	129-0308-00	NUT, PLAIN, CONESEAT.....	EA	3
10	67	PAHZZ	5305-00-043-6638	10009	211-0008-00	SCREW, MACHINE.....	EA	3
10	68	PAHZZ	5999-00-173-9923	10009	131-0604-00	CONTACT, ELECTRICAL.....	EA	35
10	69	PAHZZ	5999-00-417-3841	2526	47353	CONTACT, ELECTRICAL.....	EA	37
10	70	XDHZZ		10009	388-2796-01	PRINTED WIRING.....	EA	1

SECTION IV NATIONAL STOCK NUMBER AND PART NUMBER INDEX

STOCK NUMBER	FIGURE NO.	ITEM NO.	STOCK NUMBER	FIGURE NO.	ITEM NO.
5935-00-001-7558	1	102	5905-00-136-8431	7	34
5305-00-005-8245	8	1	5905-00-138-3291	6	109
5305-00-005-8245	8	2	5975-00-139-0251	1	115
5305-00-005-8245	8	26	5975-00-139-0270	1	114
5910-00-007-0803	6	21	5975-00-139-0271	1	113
5905-00-018-0860	6	106	5975-00-139-0296	1	11
5905-00-021-6494	6	48	5905-00-139-0350	10	42
5905-00-021-6497	6	111	5905-00-139-1678	10	23
5905-00-021-6497	7	16	5905-00-140-7069	6	115
5305-00-043-6638	1	31	5905-00-141-0743	6	51
5305-00-043-6638	1	78	5905-00-141-1295	6	91
5305-00-043-6638	1	81	5910-00-149-0628	10	8
5305-00-043-6638	10	67	5910-00-149-0629	6	8
5905-00-048-6797	6	82	5310-00-158-5237	1	24
5910-00-050-8329	5	2	5310-00-158-5237	1	25
5910-00-054-0131	6	13	5310-00-158-5237	1	89
6240-00-062-6173	2	5	5905-00-164-1753	6	113
5950-00-078-1510	10	17	5999-00-173-9923	9	11
5905-00-097-9533	6	50	5999-00-173-9923	10	68
5905-00-097-9533	7	17	5905-00-189-2466	6	120
5905-00-102-5289	6	65	5310-00-193-6731	8	17
5905-00-102-5289	7	18	5910-00-226-0475	10	1
5905-00-102-5289	10	54	5940-00-226-9616	1	42
5905-00-104-8358	6	55	5905-00-228-5506	6	41
5905-00-104-8360	6	90	5310-00-231-4954	1	16
5905-00-104-8360	10	38	5310-00-231-4954	1	17
5905-00-104-8363	6	80	5310-00-231-4954	1	104
5905-00-104-8363	7	24	5310-00-231-4954	8	14
5905-00-104-8368	4	3	5961-00-232-7324	6	38
5905-00-104-8368	10	51	5905-00-240-6761	10	56
5905-00-104-8369	6	101	5305-00-245-4882	5	9
5905-00-104-8370	6	83	5305-00-245-4882	7	46
5961-00-105-7681	2	2	5961-00-247-6351	6	24
5961-00-105-7681	6	22	5905-00-250-6216	6	62
5961-00-105-7681	7	9	5905-00-252-1673	10	39
5961-00-105-7681	10	15	5961-00-257-1044	6	34
5905-00-105-7764	7	31	5910-00-270-1262	6	12
5905-00-105-7765	3	5	5999-00-275-0213	4	6
5905-00-106-1248	6	102	5999-00-275-0213	5	7
5905-00-106-1248	7	36	5999-00-275-0213	7	42
5905-00-106-1278	6	95	5999-00-275-0213	9	7
5905-00-106-1356	6	64	5999-00-275-0213	10	65
5905-00-106-1356	7	40	5905-00-285-0422	6	119
5905-00-106-3668	7	30	5999-00-285-2987	1	43
5905-00-106-9356	6	93	5999-00-285-2987	1	62
5905-00-106-9356	10	52	5999-00-285-2987	6	142
5905-00-106-9357	7	25	5355-00-343-4306	1	7
5905-00-109-9823	6	87	5961-00-350-2246	6	36
5905-00-109-9848	10	35	5905-00-359-4133	6	121
5905-00-110-7622	6	92	5905-00-361-8550	10	44
5905-00-111-4727	6	72	5961-00-365-9939	6	32
5905-00-111-4727	10	53	5930-00-368-1354	8	20
5905-00-111-4750	6	85	5910-00-368-2301	6	5
5905-00-112-1292	6	125	5930-00-369-7915	5	5
5905-00-113-4860	6	59	5910-00-372-0582	7	5
5910-00-113-5499	10	14	5905-00-378-0338	1	26
5905-00-114-0710	6	58	5962-00-378-0348	6	127
5905-00-114-5339	9	3	5985-00-386-8255	1	103
5905-00-116-2394	6	45	5999-00-394-0383	6	135
5905-00-116-2394	7	19	5999-00-396-6336	10	63
5905-00-116-8556	10	28	5930-00-397-4126	3	8
5905-00-119-3503	6	96	5930-00-397-4126	4	9
5905-00-119-3505	6	89	5930-00-397-4127	2	1
5905-00-119-8811	1	23	6625-00-397-4152	1	86
5905-00-119-8811	6	43	5950-00-402-8002	6	25
5905-00-119-8811	7	32	5961-00-404-6720	6	30
5905-00-119-8811	9	5	5961-00-404-6720	7	12
5905-00-119-8811	10	48	5961-00-404-6720	10	18
5905-00-119-8812	7	23	5905-00-405-7969	6	118
5905-00-119-8812	10	27	5310-00-407-4600	8	22
5905-00-122-0004	6	81	5310-00-407-4600	8	33
5905-00-126-6683	6	63	5310-00-407-4600	8	37
5905-00-126-6683	7	37	5310-00-407-4601	1	96
5905-00-126-6683	10	50	5962-00-412-1023	6	129
5905-00-126-6692	6	60	6625-00-412-8382	1	84
5905-00-131-9729	6	100	5999-00-417-3841	10	69
5905-00-135-6045	7	27	5355-00-419-4045	1	13
5905-00-136-3890	9	6	5905-00-426-7737	10	29
5905-00-136-3891	6	79	5905-00-426-7760	6	110
5905-00-136-8431	6	70	5905-00-426-7779	6	112

SECTION IV NATIONAL STOCK NUMBER AND PART NUMBER INDEX

STOCK NUMBER	FIGURE NO.	ITEM NO.	STOCK NUMBER	FIGURE NO.	ITEM NO.
5910-00-430-5750	3	3	5910-00-814-7525	5	1
5910-00-430-5750	7	8	5365-00-816-0002	6	144
5905-00-432-0420	6	86	5910-00-816-4158	4	2
5910-00-433-3955	10	7	5910-00-816-4158	6	17
5999-00-434-2894	1	99	5910-00-816-4158	10	5
5935-00-434-2897	1	57	5910-00-827-6274	3	1
5905-00-434-5053	6	74	5305-00-841-8060	1	4
5905-00-434-5068	6	67	5961-00-866-5454	6	130
5905-00-434-5073	6	44	5910-00-879-6778	6	4
5905-00-434-5080	10	26	5910-00-879-6843	6	19
5905-00-435-1718	6	53	5961-00-879-7461	6	33
5961-00-436-2886	6	131	5905-00-879-7815	6	117
5961-00-436-3286	10	22	5961-00-892-8706	6	27
5961-00-436-3317	7	10	5961-00-892-8706	7	14
5910-00-436-5225	10	3	5961-00-892-8706	10	19
5910-00-436-7154	10	12	5905-00-900-1211	6	124
5905-00-441-7812	9	4	5910-00-903-8336	7	4
5905-00-441-7816	6	104	5905-00-904-5676	6	57
6210-00-442-2334	1	22	5905-00-904-5689	6	71
5930-00-443-9630	6	126	5905-00-905-6279	6	47
5360-00-447-8721	8	31	5905-00-905-6279	7	26
5910-00-451-3209	6	20	5905-00-907-4118	6	54
5310-00-470-3187	1	97	5905-00-907-4119	6	40
6250-00-476-0489	1	20	5961-00-908-7598	6	23
5910-00-477-7521	6	1	5961-00-908-7598	9	1
5360-00-480-3639	8	5	5961-00-908-7598	10	16
5990-00-481-4821	8	36	5905-00-909-3834	6	105
5935-00-487-8261	6	134	5905-00-909-3834	7	15
5905-00-487-8296	6	98	5905-00-909-3834	10	31
5910-00-488-3245	6	18	5905-00-909-3885	6	68
5905-00-488-7816	8	15	5905-00-909-3885	7	38
5905-00-488-8105	1	88	5905-00-909-3885	10	37
5961-00-488-9927	6	37	5905-00-909-3919	6	99
5305-00-492-2145	1	101	5905-00-909-3919	7	33
5961-00-497-9207	6	35	5905-00-909-3919	10	32
6145-00-500-5679	1	47	5905-00-909-3954	6	103
6145-00-500-5679	1	65	5905-00-909-3967	3	6
5999-00-500-9657	1	45	5905-00-911-3752	6	73
5999-00-500-9657	1	63	5905-00-911-3753	6	52
5905-00-502-4236	10	45	5905-00-911-3753	7	28
6625-00-516-8398	1	85	5905-00-911-3753	10	36
6625-00-520-4948	1	72	5905-00-911-3754	6	39
5905-00-546-3183	6	87	5905-00-911-3754	7	39
5910-00-548-1037	6	6	5905-00-911-3779	6	77
5999-00-551-9433	2	3	5905-00-911-3792	10	49
5999-00-551-9433	5	6	5905-00-911-3811	6	108
5999-00-551-9433	6	133	5905-00-911-3811	7	35
5999-00-551-9433	7	44	5905-00-911-3815	6	114
5999-00-551-9433	10	64	5905-00-913-9415	6	78
5999-00-551-9434	9	8	5910-00-913-9920	10	4
5999-00-551-9434	10	60	5905-00-914-2448	1	91
5315-00-579-9841	1	110	5905-00-914-2448	5	4
5930-00-597-4964	8	29	5905-00-916-7268	9	2
5935-00-597-5054	1	36	5910-00-917-1867	6	10
5935-00-597-5054	1	58	5905-00-918-6522	6	49
5935-00-597-5055	1	35	5905-00-918-6522	7	22
5935-00-599-8831	1	37	5905-00-919-5708	6	88
5935-00-599-8832	1	39	5905-00-919-5713	6	94
5935-00-599-8832	1	61	5905-00-922-9925	6	66
3120-00-610-5738	1	108	5961-00-925-3777	6	28
5905-00-622-0168	10	41	5340-00-927-4932	1	79
5905-00-632-4193	10	46	5961-00-930-5325	10	21
5910-00-681-9152	6	2	5961-00-931-0372	6	26
5910-00-681-9152	7	7	5910-00-932-7113	6	16
5910-00-688-8702	6	15	5940-00-935-8313	7	51
5910-00-688-8702	7	2	5940-00-935-8313	10	59
5910-00-688-8702	10	13	5910-00-937-1329	10	2
5910-00-721-2030	7	3	5325-00-937-2211	8	21
5905-00-721-3703	6	116	5905-00-959-1202	6	56
5355-00-763-2993	1	10	5905-00-959-1202	10	55
5905-00-763-4656	6	84	5905-00-960-0099	6	97
5905-00-766-9392	6	46	5910-00-983-2624	4	1
5905-00-766-9392	7	21	5910-00-989-7290	3	2
5905-00-772-7106	10	25	5905-00-998-1796	10	24
5961-00-780-8368	6	29	5355-01-004-8024	1	6
5910-00-782-7614	7	1	5910-01-004-9881	10	11
5905-00-801-0450	6	76	5910-01-005-9253	6	14
5910-00-801-1005	6	9	5910-01-005-9253	10	6
5910-00-801-3866	6	11	5905-01-007-1324	10	43
5910-00-814-7525	3	4	5905-01-007-1328	10	47

SECTION IV NATIONAL STOCK NUMBER AND PART NUMBER INDEX

STOCK NUMBER	FIGURE NO.	ITEM NO.	STOCK NUMBER	FIGURE NO.	ITEM NO.
6625-01-013-0469	8	8	5910-01-055-6719	1	92
6625-01-013-0470	8	9	4920-01-063-2437	1	28
5940-01-021-9837	1	41	5905-01-064-9047	6	107
5935-01-022-2968	10	62	5930-01-067-1112	8	16
5999-01-022-6616	1	44	5935-01-067-1246	7	48
5999-01-022-9144	1	60	5355-01-068-1340	1	12
5999-01-023-1578	1	46	5999-01-074-8807	6	141
5975-01-025-4623	1	112	5999-01-074-8807	7	50
5935-01-030-3001	1	38	5910-01-075-9469	6	3
5935-01-030-5122	1	59	5935-01-081-0156	6	139
5905-01-031-0439	6	61	6625-01-083-7347	1	109
5905-01-033-8421	1	27	5905-01-084-0761	7	29
5310-01-033-9624	10	57	5905-01-084-1900	6	69
5310-01-033-9624	10	66	5905-01-084-2923	6	123
5935-01-035-0403	1	40	5910-01-084-2932	10	10
5961-01-038-2072	7	47	5905-01-084-5941	6	75
5961-01-038-2073	7	45	5910-01-086-6378	7	6
5355-01-044-5249	1	111	5905-01-090-2938	10	34
5935-01-044-5623	6	132	5962-01-092-3636	6	128
5961-01-044-5776	1	21	5905-01-098-1506	10	33
5905-01-044-8432	6	122	6625-01-103-8128	1	1
5961-01-045-0007	6	31	6625-01-110-6029	1	77
5961-01-045-0007	7	11	5961-01-115-5168	7	13
5961-01-045-0007	10	20	6625-01-118-4864	1	76
5930-01-047-6715	1	83	6625-01-118-4865	8	25
5962-01-048-1287	7	41	6625-01-118-5647	1	33
4920-01-054-4903	8	6			

FSCM	PART NUMBER	FIGURE NO.	ITEM NO.	FSCM	PART NUMBER	FIGURE NO.	ITEM NO.
28520	B-187-125	1	15	01121	CB4725	7	28
91418	BX102P5014R9	6	15	01121	CB4725	10	36
91418	BX102P5014R9	7	2	01121	CB5105	6	105
91418	BX102P5014R9	10	13	01121	CB5105	7	15
02735	CA3046	6	129	01121	CB5105	10	31
01121	CB1015	1	90	01121	CB5125	6	39
01121	CB1015	3	7	01121	CB5125	7	39
01121	CB1015	5	3	01121	CB5635	6	78
01121	CB1015	6	42	01121	CB6215	6	79
01121	CB1015	7	20	01121	CB6245	10	39
01121	CB1015	10	30	01121	CB7505	7	25
01121	CB1025	6	50	01121	CB7525	6	77
01121	CB1025	7	17	01121	CB7535	9	2
01121	CB1035	6	68	01121	CB8205	6	80
01121	CB1035	7	38	01121	CB8205	7	24
01121	CB1035	10	37	01121	CB8215	6	49
01121	CB1045	6	56	01121	CB8215	7	22
01121	CB1045	10	55	01121	CB8225	6	55
J1121	CB1225	6	94	01121	CB9105	6	88
01121	CB1245	6	57	01121	CB9125	6	121
01121	CB1335	10	49	81349	CC22UJ470F	10	5
01121	CB1535	6	71	81349	CC22UJ470F	4	2
01121	CB1625	6	102	81349	CC22UJ470F	6	17
01121	CB1625	7	36	81349	CC30UJ680G	3	1
01121	CB1825	6	47	75042	CEBTO-1501F	6	84
01121	CB1825	7	26	75042	CECTO-3650F	10	26
01121	CB2015	6	99	75042	CECTO-4993F	1	91
01121	CB2015	7	33	75042	CECTO-4993F	5	4
01121	CB2015	10	32	75042	CECTO-9760F	6	61
01121	CB2025	6	65	81349	CMR05E360GODR	1	92
01121	CB2025	7	18	73803	CS9002-14	6	139
01121	CB2025	10	54	73803	CS9002-16	7	48
01121	CB2245	3	5	73803	CS9002-20	6	132
01121	CB2415	6	53	90484	DAB7OJAAWHITE	1	47
01121	CB2425	6	108	90484	DAB7OJAAWHITE	1	65
01121	CB2425	7	35	72136	DM15F950F500V	6	13
01121	CB2705	6	59	00853	D151E560FO	10	3
01121	CB2735	6	114	12954	D22C35M1	6	20
01121	CB3035	6	103	01121	EB1335	6	106
01121	CB3045	6	76	01963	E63-10H	8	29
01121	CB3335	3	6	26512	GT805EC2	1	43
01121	CB3915	6	54	26512	GT805EC2	1	62
01121	CB3935	6	40	26512	GT805EC2	6	142
01121	CB4315	6	46	14433	G866	6	23
01121	CB4315	7	21	14433	G866	9	1
01121	CB4335	6	81	14433	G866	10	16
01121	CB4715	6	73	91637	HFF1-033514C	10	40
01121	CB4725	6	52	91637	HFFLC33513B	10	42

SECTION IV

NATIONAL STOCK NUMBER AND PART NUMBER INDEX

FSCM	PART NUMBER	FIGURE ITEM		FSCM	PART NUMBER	FIGURE ITEM	
		NO.	NO.			NO.	NO.
91637	HMF129C11173B	10	43	81349	RNC55K47R5FS	6	125
56289	HY525	10	2	81349	RNC55K4990FS	6	86
81349	JAN1N821	6	130	81349	RNC55K53R6FS	10	23
81349	JAN2N2907A	6	28	81349	RNC55K6340FS	6	113
17856	J2133	6	32	81349	RNC60K1911FS	6	119
91637	MFF1816G10001F	6	67	81349	RNC60K2151FS	6	115
91637	MFF1816G12100F	6	74	81349	RNC60K2801FS	6	120
91637	MFF1816G14000F	6	117	91637	RS28-817500F	6	124
91637	MFF1816G15000F	10	35	01295	SKA3310	6	37
91637	MFF1816G17801F	6	44	01295	SKA5390	7	10
91637	MFF1816G200R0F	10	24	04713	SPS6868K	6	26
91637	MFF1816G23201F	10	34	04713	SPS8006	7	13
91637	MFF1816G24R90F	10	25	04713	SPS8801	6	33
91637	MFF1816G24900F	6	48	04713	SPS8803	6	36
91637	MFF1816G24901F	6	110	08261	SS-0626-710610C	1	52
91637	MFF1816G28700F	10	29	08261	SS-0826-710610C	1	53
91637	MFF1816G340R0F	6	87	08261	SS-526-710610C	1	51
91637	MFF1816G37401F	9	4	08261	SS-526-710610C	1	68
91637	MFF1816G38R30F	6	122	04713	SSD1150	6	24
91637	MFF1816G45302F	4	4	04713	SS106	6	34
91637	MFF1816G49900F	6	66	04713	SZ13903	6	131
91637	MFF1816G49901F	6	112	07263	S024848	6	30
91637	MFF1816G49902F	6	111	07263	S024848	10	18
91637	MFF1816G49902F	7	16	07263	S024849	6	29
91637	MFF1816G60400F	6	107	07263	S032677	6	27
91637	MFF1816G845R0F	6	118	07263	S032677	7	14
91637	MFF1816G976R0F	6	104	07263	S032677	10	19
19701	MF5CD5622F	4	5	34148	S036228	6	31
19701	MF7CE11172B	10	46	34148	S036228	7	11
19701	MF7CE22342B	10	45	34148	S036228	10	20
80031	MF7CE55851B	10	47	07263	S038487	10	22
80031	MF7CE55852B	10	44	07263	S040065	10	21
81349	M39014/02-1350	10	14	07263	S04848	7	12
A1997	N400-512-027	7	27	07263	S24850	6	38
A1997	N400-512-041	7	23	07263	S39288	6	35
A1997	N400-512-041	10	27	90201	TDC156M020FL	6	1
A1997	N400-512-056	6	45	90201	TDC475K01DEL	6	8
A1997	N400-512-056	7	19	98291	013-1001-000-479	9	9
A1997	N400-512-075	6	63	72982	0831522Z5D00271J	6	5
A1997	N400-512-075	7	37	01295	1N4152R	2	2
A1997	N400-512-075	10	50	01295	1N4152R	6	22
A1997	N400-512-078	6	70	01295	1N4152R	7	9
A1997	N400-512-078	7	34	01295	1N4152R	10	15
A1997	N400-512-094	6	93	18876	10034399-A	1	95
A1997	N400-512-094	10	52	80009	105-0075-00	1	71
03888	PME70-C11174B	10	41	80009	105-0076-02	1	109
81349	RCR07G123JS	6	95	80009	105-0340-00	8	19
81349	RCR07G151JS	1	23	80009	105-0386-01	8	7
81349	RCR07G151JS	6	43	80009	105-0387-01	8	23
81349	RCR07G151JS	7	32	80009	108-0333-00	6	25
81349	RCR07G151JS	9	5	80009	120-0382-00	10	17
81349	RCR07G151JS	10	48	27965	12019	3	2
81349	RCR07G152JS	6	64	78189	1202-00-00-0541C	1	94
81349	RCR07G152JS	7	40	78189	1214-05-00-0541C	8	17
81349	RCR07G154JS	9	3	78189	1220-02-00-0541C	1	97
81349	RCR07G220JS	7	30	80009	129-0308-00	10	57
81349	RCR07G222JS	7	31	80009	129-0308-00	10	66
81349	RCR07G223JS	10	28	80009	129-0339-00	10	58
81349	RCR07G243JS	6	91	80009	131-0604-00	9	11
81349	RCR07G271JS	6	96	80009	131-0604-00	10	68
81349	RCR07G272JS	6	72	80009	131-0722-00	2	6
81349	RCR07G272JS	10	53	80009	131-0722-00	3	9
81349	RCR07G301JS	6	85	80009	131-0722-00	4	8
81349	RCR07G302JS	6	100	80009	131-0937-00	1	75
81349	RCR07G331JS	6	58	80009	131-0963-00	8	36
81349	RCR07G361JS	6	83	71785	133-99-12-064	6	134
81349	RCR07G362JS	6	101	80009	136-0350-00	10	62
81349	RCR07G392JS	6	51	01121	14M411	8	15
81349	RCR07G470JS	4	3	00752	146493-1	6	97
81349	RCR07G470JS	10	51	80009	155-0028-00	6	128
81349	RCR07G513JS	9	6	80009	155-0049-02	6	127
81349	RCR07G620JS	6	60	80009	155-0109-01	7	41
81349	RCR07G622JS	6	41	80009	175-0072-00	1	64
81349	RCR07G623JS	6	90	80009	175-0825-00	1	49
81349	RCR07G623JS	10	38	80009	175-0825-00	1	66
81349	RCR07G682JS	6	92	80009	175-0826-00	1	50
81349	RCR07G683JS	6	89	80009	175-0826-00	1	67
81349	RNC55J2001BS	6	109	80009	175-1043-00	1	48
81349	RNC55K2320FS	6	116	74970	187-0109-005	6	12
81349	RNC55K3240FS	6	62	56289	19C241	3	4

SECTION IV NATIONAL STOCK NUMBER AND PART NUMBER INDEX

FSCM	PART NUMBER	FIGURE ITEM		FSCM	PART NUMBER	FIGURE ITEM	
		NO.	NO.			NO.	NO.
56289	19C241	5	1	80009	337-1317-00	1	98
56289	196D105X0050HA1	6	3	32997	3386F-T04-102	6	98
56289	196D225X0020HA1	6	14	32997	3386F-T04-103	7	29
56289	196D225X0020HA1	10	6	32997	3386F-T04-104	6	82
56289	196D336X0010KA1	6	21	80294	3386F-T04-203	6	75
80009	198-2121-00	1	34	32997	3386F-T04-500	6	123
80009	198-2443-00	1	56	32997	3386F-T04-501	6	69
73743	2X-12161-402	8	22	80294	3386F-T04-502	10	33
73743	2X-12161-402	8	33	80009	343-0088-00	1	79
73743	2X-12161-402	8	37	80009	348-0056-00	8	21
73743	2X-20319-402	1	16	80009	348-0235-00	1	99
73743	2X-20319-402	1	17	80009	352-0157-00	1	20
73743	2X-20319-402	1	104	80009	352-0161-00	1	37
73743	2X-20319-402	8	14	80009	352-0161-02	1	38
73743	2X28269-402	1	96	80009	352-0161-05	1	59
80009	200-0935-00	1	22	80009	352-0162-00	1	60
80009	200-0945-00	7	45	80009	352-0163-00	1	39
80009	200-0945-01	7	47	80009	352-0163-00	1	61
80009	200-1440-00	8	32	80009	352-0164-00	1	40
05820	20558	6	135	80009	352-0166-00	1	41
80009	210-0850-00	8	28	80009	352-0169-00	1	36
80009	210-0940-00	1	24	80009	352-0169-00	1	58
80009	210-0940-00	1	25	80009	352-0169-01	1	57
80009	210-0940-00	1	89	80009	352-0198-00	1	35
80009	211-0001-00	5	9	80009	352-0240-00	6	136
80009	211-0001-00	7	46	80009	354-0410-00	1	8
80009	211-0008-00	1	31	80009	361-0007-00	6	144
80009	211-0008-00	1	78	80009	366-0494-00	1	10
80009	211-0008-00	1	81	80009	366-1058-50	1	111
80009	211-0008-00	10	67	80009	366-1077-00	1	13
80009	211-0101-00	1	101	80009	366-1135-02	3	8
80009	211-0105-00	1	4	80009	366-1135-02	4	9
80009	211-0116-00	8	1	80009	366-1249-02	2	1
80009	211-0116-00	8	2	80009	366-1257-90	1	115
80009	211-0116-00	8	26	80009	366-1257-91	1	114
80009	211-0156-00	1	105	80009	366-1257-92	1	113
80009	211-0156-00	1	106	80009	366-1257-93	1	11
80009	211-0156-00	1	107	80009	366-1321-00	1	7
80009	211-0185-00	8	27	80009	366-1391-02	1	12
80009	213-0192-00	1	18	80009	366-1405-00	1	6
80009	213-0192-00	1	54	72982	374-001C0H0569D	6	19
80009	214-0579-00	7	51	72982	374001C0H180K	6	4
80009	214-0579-00	10	59	80009	376-0092-01	8	13
80009	214-0579-02	6	137	80009	376-0092-03	8	18
80009	214-1054-00	1	70	80009	376-0101-00	1	32
80009	214-1061-00	1	2	80009	376-0129-01	8	11
80009	214-1139-02	8	5	12697	381-CM39691	1	27
80009	214-1139-03	8	31	12697	381-CM39695	1	26
80009	214-1280-00	1	100	12697	381-CM39701	1	88
80009	214-1597-00	1	83	80009	384-0878-04	8	34
80009	214-1752-00	8	6	80009	384-0882-02	8	10
80009	220-0547-01	1	80	80009	384-1059-00	1	29
80009	220-0619-00	8	30	80009	384-1087-00	1	9
80009	220-0637-00	5	8	80009	384-1101-00	1	28
10389	23-021-043	8	20	80009	384-1120-00	1	30
80009	260-1133-00	5	5	80009	384-1153-00	8	12
80009	260-1208-00	6	126	80009	386-1402-00	1	55
80009	263-1099-00	8	4	80009	386-1447-58	1	19
80009	285-0753-06	10	9	80009	386-2141-00	6	143
80009	285-0784-02	10	11	80009	386-2228-00	1	73
80009	285-0895-00	10	10	80009	388-2425-01	6	138
80009	295-0156-00	10	8	80009	388-2426-01	7	43
72982	301-000C0G0150J	3	3	80009	388-2427-00	5	10
72982	301-000C0G0150J	7	8	80009	388-2428-00	2	4
72982	301-000C0G0220K	7	4	80009	388-2429-00	3	10
72982	301-000C0J0279C	10	1	80009	388-2430-00	4	7
72982	301-000U2M0101M	6	2	80009	388-2757-00	1	74
72982	301-000U2M0101M	7	7	80009	388-2796-01	10	70
72982	301-055C0G0100F	6	7	80009	388-2797-01	9	10
32997	3059Y-J53-501	10	56	80009	401-0126-00	1	108
72982	308-000C0G0270K	5	2	80009	401-0178-00	8	8
72982	308-000C0G0470K	6	11	80009	401-0180-00	8	9
13511	31-279	1	102	56289	403637	6	6
97464	3100-37-CD	8	35	80009	407-0803-00	8	16
56289	33C158	7	1	80009	426-0499-11	1	69
72982	331-000C0H0-5698	6	18	80009	426-0505-11	1	5
80009	333-1542-02	1	14	80009	426-0681-00	1	112
80009	334-3438-00	1	3	22526	46221	1	46
80009	334-3448-00	8	24	22526	46235	1	42
80009	337-1064-04	1	1	22526	46241	1	44

SECTION IV

NATIONAL STOCK NUMBER AND PART NUMBER INDEX

FSCM	PART NUMBER	FIGURE ITEM		FSCM	PART NUMBER	FIGURE ITEM	
		NO.	NO.			NO.	NO.
22526	47350	4	6	80009	670-1865-04	1	77
22526	47350	5	7	80009	670-1866-01	1	82
22526	47350	7	42	80009	670-1867-00	1	86
22526	47350	9	7	80009	670-1868-00	1	85
22526	47350	10	65	80009	670-1869-00	1	84
22526	47351 LOOSEPIECE	9	8	80009	670-2216-00	1	72
22526	47351 LOOSEPIECE	10	60	80009	670-2257-04	8	3
22526	47353	10	69	80009	670-2258-02	8	25
22526	47355	10	63	80009	672-0049-04	1	76
22526	47357	2	3	08806	683AS15	2	5
22526	47357	5	6	04222	7001-1113	6	10
22526	47357	6	133	04222	7001-1375	10	4
22526	47357	7	44	22526	75060-012	6	140
22526	47357	10	64	22526	75060-012	7	49
22526	47358	10	61	22546	75302-001	6	141
22526	47437	1	45	22546	75302-001	7	50
22526	47437	1	63	05129	771-S-1	1	103
56289	5130475G035KA	7	6	72982	811-546E103Z	7	3
72962	51-022-094-0187	1	110	72982	8121-N088Z5U104M	10	12
72619	511-9206	1	21	72982	8121N153X7R0473K	10	7
02111	514-70	1	87	72982	8131N031Z5U0105Z	6	16
72982	518-011 09-35	4	1	72982	8131N075E474M	7	5
71279	512-4894-01-0516	1	93	72982	855-558Z5U-103Z	6	9
80009	610-1864-03	1	33				





By Order of the Secretaries of the Army, the Navy, and the Air Force:

Official:

ROBERT M. JOYCE  
*Brigadier General, United States Army*  
*The Adjutant General*

E. C. MEYER  
*General, United States Army*  
*Chief of Staff*

Official:

JAMES P. MULLINS  
*General, USAF, Commander, Air Force*  
*Logistics Command*

H. D. ARNOLD  
*Rear Admiral, United States Navy*  
*Commander, Naval Electronic*  
*Systems Command*

CHARLES A. GABRIEL, *General USAF*  
*Chief of Staff*

RECOMMENDED CHANGES TO EQUIPMENT TECHNICAL PUBLICATIONS



THEN... JOT DOWN THE DOPE ABOUT IT ON THIS FORM. CAREFULLY TEAR IT OUT. FOLD IT AND DROP IT IN THE MAIL!

SOMETHING WRONG WITH THIS PUBLICATION?

FROM (PRINT YOUR UNIT'S COMPLETE ADDRESS)

Commander  
Stateside Army Depot  
ATTN: AMSTA-US  
Stateside, N.J. 07703

DATE SENT

10 July 1975

PUBLICATION NUMBER

TM 11-5840-340-12

PUBLICATION DATE

23 Jan 74

PUBLICATION TITLE

Radar Set AN/PRC-76

BE EXACT PIN-POINT WHERE IT IS

PAGE NO	PARA-GRAPH	FIGURE NO	TABLE NO
2-25	2-28		
3-10	3-3		3-1
5-6	5-8		
		F03	

IN THIS SPACE TELL WHAT IS WRONG AND WHAT SHOULD BE DONE ABOUT IT:

Recommend that the installation antenna alignment procedure be changed throughout to specify a 2° IFF antenna lag rather than 1°.

REASON: Experience has shown that with only a 1° lag, the antenna servo system is too sensitive to wind gusting in excess of 25 knots, and has a tendency to rapidly accelerate and decelerate as it hunts, causing strain to the drive train. Hunting is minimized by adjusting the lag to 2° without degradation of operation.

Item 5, Function column. Change "2 db" to "3db."

REASON: The adjustment procedure the the TRANS POWER FAULT indicator calls for a 3 db (500 watts) adjustment to light the TRANS POWER FAULT indicator.

Add new step f.1 to read, "Replace cover plate removed in step e.1, above."

REASON: To replace the cover plate.

Zone C 3. On J1-2, change "+24 VDC to "+5 VDC."

REASON: This is the output line of the 5 VDC power supply. +24 VDC is the input voltage.

TEAR ALONG PERFORATED LINE

PRINTED NAME, GRADE OR TITLE, AND TELEPHONE NUMBER

SSG I. M. DeSpirito 999-1776

SIGN HERE

DA FORM 2028-2  
1 JUL 79

PREVIOUS EDITIONS ARE OBSOLETE.

PS--IF YOUR OUTFIT WANTS TO KNOW ABOUT YOUR RECOMMENDATION MAKE A CARBON COPY OF THIS AND GIVE IT TO YOUR HEADQUARTERS





FILL IN YOUR  
UNIT'S ADDRESS

FOLD BACK

DEPARTMENT OF THE ARMY

\_\_\_\_\_  
\_\_\_\_\_

OFFICIAL BUSINESS  
PENALTY FOR PRIVATE USE \$300

POSTAGE AND FEES PAID  
DEPARTMENT OF THE ARMY  
DOD 314



TEAR ALONG PERFORATED LINE

Commander  
US Army Communications-  
Electronics Command  
ATTN: DRSEL-ME-MQ  
Fort Monmouth, New Jersey 07703

RECOMMENDED CHANGES TO EQUIPMENT TECHNICAL PUBLICATIONS



THEN...JOT DOWN THE DOPE ABOUT IT ON THIS FORM. CAREFULLY TEAR IT OUT, FOLD IT AND DROP IT IN THE MAIL.

**SOMETHING WRONG WITH THIS PUBLICATION?**

FROM: (PRINT YOUR UNIT'S COMPLETE ADDRESS)

DATE SENT

PUBLICATION NUMBER TM 11-6625-2733-24P	PUBLICATION DATE 9 Oct 82	PUBLICATION TITLE TD-1159/U, Dual Time Base Plug-In Unit
---	------------------------------	--

BE EXACT PIN-POINT WHERE IT IS				IN THIS SPACE TELL WHAT IS WRONG AND WHAT SHOULD BE DONE ABOUT IT:
PAGE NO.	PARA-GRAPH	FIGURE NO.	TABLE NO.	

TEAR ALONG PERFORATED LINE

PRINTED NAME GRADE OR TITLE AND TELEPHONE NUMBER	SIGN HERE
--	-----------

FILL IN YOUR  
UNIT'S ADDRESS

FOLD BACK

DEPARTMENT OF THE ARMY

\_\_\_\_\_  
\_\_\_\_\_

OFFICIAL BUSINESS  
PENALTY FOR PRIVATE USE \$300

POSTAGE AND FEES PAID  
DEPARTMENT OF THE ARMY  
DOD 314



TEAR ALONG PERFORATED LINE

Commander  
US Army Communications-  
Electronics Command  
ATTN: DRSEL-ME-MQ  
Fort Monmouth, New Jersey 07703





THEN...JOT DOWN THE DOPE ABOUT IT ON THIS FORM. CAREFULLY TEAR IT OUT, FOLD IT AND DROP IT IN THE MAIL.

**SOMETHING WRONG WITH THIS PUBLICATION?**

FROM: (PRINT YOUR UNIT'S COMPLETE ADDRESS)

DATE SENT

PUBLICATION NUMBER

TM 11-6625-2733-24P

PUBLICATION DATE

9 Oct 82

PUBLICATION TITLE TD-1159/U, Dual Time

Base Plug-In Unit

BE EXACT PIN-POINT WHERE IT IS

PAGE NO.	PARA-GRAPH	FIGURE NO.	TABLE NO.

IN THIS SPACE TELL WHAT IS WRONG AND WHAT SHOULD BE DONE ABOUT IT:

TEAR ALONG PERFORATED LINE

PRINTED NAME GRADE OR TITLE AND TELEPHONE NUMBER

SIGN HERE

FILL IN YOUR  
UNIT'S ADDRESS

FOLD BACK

DEPARTMENT OF THE ARMY

\_\_\_\_\_  
\_\_\_\_\_

OFFICIAL BUSINESS  
PENALTY FOR PRIVATE USE \$300

POSTAGE AND FEES PAID  
DEPARTMENT OF THE ARMY  
DOD 314



TEAR ALONG PERFORATED LINE

Commander  
US Army Communications-  
Electronics Command  
ATTN: DRSEL-ME-MQ  
Fort Monmouth, New Jersey 07703

# THE METRIC SYSTEM AND EQUIVALENTS

## WEIGHT MEASURE

1 Centimeter = 10 Millimeters = 0.01 Meters = 0.3937 Inches  
 1 Meter = 100 Centimeters = 1000 Millimeters = 39.37 Inches  
 1 Kilometer = 1000 Meters = 0.621 Miles

## WEIGHTS

1 Gram = 0.001 Kilograms = 1000 Milligrams = 0.035 Ounces  
 1 Kilogram = 1000 Grams = 2.2 lb.  
 1 Metric Ton = 1000 Kilograms = 1 Megagram = 1.1 Short Tons

## LIQUID MEASURE

1 Milliliter = 0.001 Liters = 0.0338 Fluid Ounces  
 1 Liter = 1000 Milliliters = 33.82 Fluid Ounces

## SQUARE MEASURE

1 Sq. Centimeter = 100 Sq. Millimeters = 0.155 Sq. Inches  
 1 Sq. Meter = 10,000 Sq. Centimeters = 10.76 Sq. Feet  
 1 Sq. Kilometer = 1,000,000 Sq. Meters = 0.386 Sq. Miles

## CUBIC MEASURE

1 Cu. Centimeter = 1000 Cu. Millimeters = 0.06 Cu. Inches  
 1 Cu. Meter = 1,000,000 Cu. Centimeters = 35.31 Cu. Feet

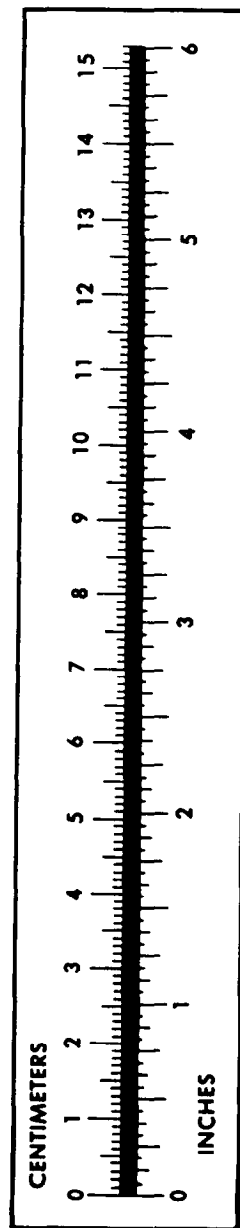
## TEMPERATURE

$5/9(^{\circ}\text{F} - 32) = ^{\circ}\text{C}$   
 212° Fahrenheit is equivalent to 100° Celsius  
 90° Fahrenheit is equivalent to 32.2° Celsius  
 32° Fahrenheit is equivalent to 0° Celsius  
 $9/5^{\circ}\text{C} + 32 = ^{\circ}\text{F}$

## APPROXIMATE CONVERSION FACTORS

TO CHANGE	TO	MULTIPLY BY
Inches	Centimeters	2.540
Feet	Meters	0.305
Yards	Meters	0.914
Miles	Kilometers	1.609
Square Inches	Square Centimeters	6.451
Square Feet	Square Meters	0.093
Square Yards	Square Meters	0.836
Square Miles	Square Kilometers	2.590
Acres	Square Hectometers	0.405
Cubic Feet	Cubic Meters	0.028
Cubic Yards	Cubic Meters	0.765
Fluid Ounces	Milliliters	29.573
its	Liters	0.473
arts	Liters	0.946
allons	Liters	3.785
Ounces	Grams	28.349
Pounds	Kilograms	0.454
Short Tons	Metric Tons	0.907
Pound-Feet	Newton-Meters	1.356
Pounds per Square Inch	Kilopascals	6.895
Miles per Gallon	Kilometers per Liter	0.425
Miles per Hour	Kilometers per Hour	1.609

TO CHANGE	TO	MULTIPLY BY
Centimeters	Inches	0.394
Meters	Feet	3.280
Meters	Yards	1.094
Kilometers	Miles	0.621
Square Centimeters	Square Inches	0.155
Square Meters	Square Feet	10.764
Square Meters	Square Yards	1.196
Square Kilometers	Square Miles	0.386
Square Hectometers	Acres	2.471
Cubic Meters	Cubic Feet	35.315
Cubic Meters	Cubic Yards	1.308
Milliliters	Fluid Ounces	0.034
Liters	Pints	2.113
Liters	Quarts	1.057
ers	Gallons	0.264
ms	Ounces	0.035
ograms	Pounds	2.205
Metric Tons	Short Tons	1.102
Newton-Meters	Pounds-Feet	0.738
Kilopascals	Pounds per Square Inch	0.145
ometers per Liter	Miles per Gallon	2.354
ometers per Hour	Miles per Hour	0.621



**PIN: 032855-000**